

Watersports and Leisure Participation Survey 2005

BMF, MCA, RNLI and RYA, sponsored by Sunsail



The Old Coach House
Wharf Road
Guildford Surrey
GU1 4RP
01483 510 310
01483 510 319
Email comms@arkenford.co.uk

Contacts;
Crawford Christie
Karen Schumacher



Foreword

By Sally Banham, British Marine Federation

2005 saw the original consortium of BMF, RYA and Sunsail, expand to include the Maritime and Coastguard Agency (MCA) and the Royal National Lifeboat Institution (RNLI). The partnership is a good platform from which to promote a common understanding about watersports and leisure participation around our coasts and waterways, as well as overseas by UK Citizens.

With new partners on board, we had an opportunity to consider other activities, in addition to traditional boating and watersports. Kitesurfing, surfing, sub-aqua, swimming outdoors, angling, coastal walking and cliff climbing have been included, as well as spending general leisure time at the beach, building on previous work by MCA. This report on Watersports and Leisure Participation thus has a wider remit than the three previous editions. We've also extended our geographical coverage to Northern Ireland and increased our sample size to 12,000 respondents.

There is clearly a large potential market for boating and watersports enthusiasts, along with a need to provide for modern facilities and promote environmental awareness. Encouraging people to spend their leisure time in or adjacent to the water is really important to the future of the leisure boating industry, to tourism and the health of the nation. There is a huge amount of information presented, so whatever the level of detail you're interested in, I hope you find the report an interesting insight into participation, both here and overseas.

Executive Summary

Key findings from Watersports and Leisure Participation Report 2005

The watersport participation for the original 12 activities stands at up to 3.5 million adults, a figure around which results to date have fluctuated. It is interesting to note this pattern of rises and falls in participation, over the last four years. Hence, whilst most surveyed activities this year showed a decrease in participation rates compared to 2004, overall participation levels were closer to the level we observed in 2003, which was slightly lower than 2002.

NB The 2005 survey was extended to Northern Ireland, therefore actual numbers of participants are not directly comparable to the previous surveys. However, comparison of percentages demonstrates the inclusion of Northern Ireland has not made a significant impact on participation rates.

Over a quarter of the UK adult population now spend some of their leisure time in ways closely linked to our coasts and inland waterways. This year's results suggest that while slightly fewer people are participating in some activities, those who do participate go more often. A few activities are also increasing in popularity (see below).

Our best estimate for the participation rate for "Any boating activity"* is 6.85%. When we apply this participation rate to the UK adult population of 47,858,000, we get to a UK base participant number of 3,277,000 (rounded to the nearest thousand). Any estimate based on a sample of the population (in this case 12,000 respondents) is only accurate within defined statistical confidence intervals. This means we are 90% certain that the true number of people participating in "Any boating activity" lies between 3,097,000 and 3,456,000 participants.

When taking all 21 surveyed activities into account† our best estimate for the participation rate for "Any activity" is 26.29% of adults in the UK. Applied to the UK adult population, quoted above, this gives us a participant number of 12,580,000 for "Any activity" (rounded to the nearest thousand). As above, this number has to be viewed within defined confidence intervals. We are 90% certain that, for "Any Activity", the true number of participants ranges between 12,267,000 and 12,892,000 people.

5 of the 21 activities are becoming more popular, specifically Motor boating/Cruising, Surfboarding, Kitesurfing, Coastal walking and Spending general leisure time at the beach have seen rises.

When considering participation rates by socio-demographics, it is apparent that for most activities men participate more than women, and younger age groups exhibit higher participation rates than older ones. The socio-economic group AB records higher participation rates than the other socio-economic groups. In spite of this, there are more people from the socio-economic group C1 in absolute numbers who participate in many of the activities. This is a reflection of the fact there are a lot more people in this group than in the other socio-economic groups.

* "Any Boating Activity" includes Small sail boat racing, Small sail boat activities, Yacht racing, Yacht cruising, Power boating, Motor boating/Cruising, Using Personal Watercraft, Rowing, Canoeing, Canal boating, Water skiing and Windsurfing

† "Any Activity" includes all of the boating activities above plus Surfboarding, Angling from the shore, Angling from a boat, Outdoor Swimming, Leisure Sub Aqua diving, Cliff Climbing, Coastal Walking, Spending General Leisure time at the beach and Kitesurfing

More participation is taking place in the UK than abroad. Unsurprisingly, this is especially true for Canal boating, where over 95% of respondents are only participating in the UK. Leisure sub-aqua diving has the highest proportion of respondents saying that they never participate in the UK.

Club membership for the surveyed activities is generally low. Only Small sail boat racing, Yacht racing and Leisure sub-aqua diving record club membership proportions of over 30%. Yacht racing records the highest club membership rate with 67% of surveyed respondents being members of a club. Club members participate more often in their chosen water based activity than other people.

With a headline figure of 12.5 million people taking part in activities in and around our coasts and inland waterways there is clearly a large potential market for boating and watersports enthusiasts. The detail given in the following report, allows a fuller insight into patterns of participation by UK citizens.

1. Introduction

The purpose of the Watersports and Leisure Participation Survey 2005 is to provide robust estimates of the level of participation in a range of watersports and water based leisure activities across the United Kingdom. Surveys in 2002, 2003 and 2004 jointly commissioned by the BMF (British Marine Federation), RYA (Royal Yachting Association) and Sunsail covered a list of 12 watersports. In 2004 the MCA (Maritime and Coastguard Agency) also conducted independent research into participation in 20 leisure based watersport and coastal activities. For 2005 the BMF, MCA, RNLI, RYA, and Sunsail have decided to carry out research as one consortium and extended the list of activities covered to 21 to meet the needs of everyone.

Table 1 summarises those activities that were included in the survey each year since 2002.

Table 1 Summary of activities

	Survey				
	BMF/RYA/ Sunsail	BMF/RYA/ Sunsail	BMF/RYA/ Sunsail	BMF/MCA/ RNLI/RYA/ Sunsail	
	2002	2003	2004	2004	2005
Canoeing	✓	✓	✓	✓	✓
Water skiing	✓	✓	✓	✓	✓
Small sail boat activities	✓	✓	✓	✓	✓
Rowing	✓	✓	✓	✓	✓
Windsurfing	✓	✓	✓	✓	✓
Using personal watercraft	✓	✓	✓	✓	✓
Motor boating/Cruising	✓	✓	✓	✓	✓
Yacht cruising	✓	✓	✓	✓	✓
Power boating	✓	✓	✓	✓	✓
Small sail boat racing	✓	✓	✓	✓	✓
Canal boating	✓	✓	✓	-	✓
Yacht racing	✓	✓	✓	✓	✓
Surfboarding	-	-	-	✓	✓
Kitesurfing	-	-	-	✓	✓
Angling (from a boat)	-	-	-	✓	✓
Angling (from the shore)	-	-	-	✓	✓
Cliff climbing	-	-	-	✓	✓
Coastal walking	-	-	-	✓	✓
Outdoor swimming	-	-	-	✓	✓
Leisure sub-aqua diving (from the shore and boat)	-	-	-	✓	✓
Spending general leisure time at the beach	-	-	-	✓	✓

With the 2005 results we are able to give an insight into annual trends by activity over 4 years (from 2002) for the original 12 BMF, RYA and Sunsail activities, and can provide an indication of any changes in participation for the additional 9 activities covered in the MCA omnibus survey in 2004.

The data on which the analysis has been based comes from a nationally representative sample of 12,000 respondents across the United Kingdom (England, Scotland, Wales and Northern Ireland). The previous surveys only covered Great Britain (England, Scotland and Wales), as there was no omnibus survey facility in place covering Northern Ireland. The previous BMF,

RYA and Sunsail surveys were based on 6,000 respondents. The weighted sample delivers information from a representative cross section of the UK population in terms of age, gender, socio-economic grouping and origin.

The Questions

Each respondent was asked if they had taken part in each of the 21 leisure based watersport or coastal activities over the 12 months preceding September 2005. As far as possible the descriptions of each activity were provided in layman's terms to allow all respondents, whatever their level of expertise, to give accurate replies. Additional explanation was provided when requested by the respondent (see Appendix 1 for definitions).

For those activities which respondents had taken part in within the last 12 months, they were asked how often they had participated. The question was split into two parts covering participation in the UK (this was asked of all 21 activities) and participation abroad (asked of the original 12 activities).

To ensure that the extension of the activities list will not have an effect on the participation rates of the original 12 activities and therefore affect comparability, it was ensured that the 12 original activities were always asked before any of the 9 added activities.

These 3 questions form the scope of the original BMF, RYA and Sunsail questionnaire. The following 4 questions are new this year with the involvement of the MCA. The MCA are sharing the information from these new questions with all other consortium members.

If the respondents had taken part in the activities in the UK in the last 12 months, they were asked how often they had participated by season (winter, spring summer and autumn).

They were then asked about how often they participated at the coast or inland, and whether they were a club member for these activities.

The last survey question relevant to this report asks respondents to indicate which area they most often visit to participate in the activity in the UK. These areas correspond with the operational coastal districts of the MCA. The results for this question will be circulated amongst the consortium members in a separate document. The analysis into regional participation rates are being progressed separately under an MCA/RNLI joint initiative. These organisations can be contacted to obtain the analysis for this separate survey.

The survey questionnaire also investigates overseas activity, the results of which will be provided in a separate report to Sunsail.

The omnibus survey questionnaire is contained in Appendix 1 at the end of this report.

The Data

A brief overview of how to interpret the tables is given with Table 2. Each section of the report is supported by written commentary explaining any assumptions made and to assist interpretation of the data.

When comparing results from 2005 and 2004 surveys, we refer to the data published in the BMF, RYA and Sunsail 2004 report for the original 12 water based activities. For the additional 9 activities added by the MCA, we refer to data from the MCA 2004 omnibus report. These are highlighted with a yellow background.

We are also looking at the 2002 and 2003 data to see if there are any trends developing over the last 4 years.

The 2005 data includes respondents from Northern Ireland. This means that, when comparing actual participant numbers, these are not directly comparable, as the population size in the 2005 survey is bigger due to the inclusion of Northern Ireland. However, when looking at the percentages, the inclusion of NI did not make a significant impact.

When assessing the contents of this report it must be considered that some of the activities can be classified as 'specialist' in that only a small number of the surveyed sample takes part in them. Small base sizes for these activities mean that a fluctuation of 1 or 2 actual respondents will have a sizeable effect on the weighted data that is reported. Activities where the base sizes are very small and hence the results should be taken as indicative only have been marked with a "*" and the warning "Caution: very low base size".

2. Participation in Surveyed Leisure Activities 2005

Table 2 details the participation in the surveyed activities in 2005.

Table 2- Watersports and Leisure Participation 2005

Participation rate 2005						Number of participants 2005 (including Northern Ireland)		
Average		Min		Max		Average	Min	Max
% for 2005		95%	90%	90%	95%	No. for 2005	90%	90%
Any Activity	26.29%	25.50%	25.63%	26.94%	27.07%	12,579,516	12,267,000	12,892,000
Any boating activity	6.85%	6.40%	6.47%	7.22%	7.29%	3,276,489	3,097,000	3,456,000
Canoeing	2.09%	1.83%	1.87%	2.30%	2.34%	998,421	897,000	1,100,000
Water skiing	0.77%	0.62%	0.64%	0.90%	0.93%	369,256	307,000	431,000
Small sail boat	1.12%	0.94%	0.97%	1.28%	1.31%	537,677	463,000	613,000
Rowing	0.99%	0.81%	0.84%	1.13%	1.16%	471,588	401,000	542,000
Windsurfing	0.58%	0.44%	0.46%	0.69%	0.71%	275,367	222,000	329,000
Using personal watercraft	0.78%	0.63%	0.65%	0.91%	0.94%	374,458	312,000	437,000
Motor boating/Cruising	1.19%	0.99%	1.02%	1.35%	1.38%	567,271	490,000	644,000
Yacht cruising	0.66%	0.51%	0.54%	0.78%	0.80%	314,554	257,000	372,000
Power boating	0.76%	0.60%	0.63%	0.88%	0.91%	361,690	300,000	423,000
Small sail boat	0.30%	0.20%	0.22%	0.38%	0.40%	144,425	105,000	183,000
Canal boating	0.54%	0.41%	0.44%	0.65%	0.68%	260,761	208,000	313,000
Yacht racing	0.17%	0.10%	0.11%	0.23%	0.24%	80,707	52,000	110,000
Surfboarding	1.26%	1.06%	1.09%	1.42%	1.45%	600,728	522,000	680,000
Kitesurfing	0.22%	0.14%	0.15%	0.29%	0.30%	105,409	72,000	139,000
Angling (from a boat)	0.97%	0.80%	0.82%	1.12%	1.14%	464,490	395,000	534,000
Angling (from the shore)	1.93%	1.68%	1.72%	2.13%	2.17%	922,113	824,000	1,020,000
Cliff climbing	0.94%	0.77%	0.80%	1.08%	1.11%	449,283	381,000	518,000
Coastal walking	12.15%	11.57%	11.67%	12.64%	12.73%	5,815,040	5,583,000	6,047,000
Outdoor swimming	10.59%	10.05%	10.14%	11.05%	11.14%	5,070,088	4,851,000	5,289,000
Leisure sub-aqua diving (from the shore and boat)	1.17%	0.98%	1.01%	1.33%	1.36%	558,087	482,000	634,000
Spending general leisure time at the beach	11.50%	10.93%	11.02%	11.97%	12.06%	5,501,730	5,275,000	5,728,000
Base	12,191					47,858,000	47,858,000	47,858,000

Base: all respondents (12,191)

Source: Watersports and Leisure Omnibus Survey 2005

The first column of Table 2 titled '% for 2005' is our best estimate of participation rates for each activity in 2005. The figure of 26.29% is our best estimate for participation in 'any' of the 21 activities asked about. We also show the best estimate of actual participation in any of the original 12 watersports as measured by the survey (listed above the dotted line). This participation rate is 6.85% (labelled "Any boating activity").

However, it should be borne in mind that any estimate based on a sample of the population is only accurate within the statistical confidence interval outlined above.

The next four columns give an indication of our lower and upper estimates of participation within different levels of confidence. For example, we are 90% confident, that the participation rate for Yacht racing lies between 0.11% and 0.23% of the UK adult population.

In the next column we convert our best estimate participation rate for 2005 into an estimate of likely numbers of participants in each activity. These are based on a total population 16+ of 47,858,000 in the UK.

In the next 2 columns we show the participant numbers at the 90% confidence interval. E.g. we are 90% confident that the number of participants in coastal walking lies between 5,583,000 and 6,047,000 people.

The population number for 2004 did not include Northern Ireland and this should be borne in mind when making comparisons with the 2004 numbers.

Table 3 Difference in participation rates 2005-2004

	Participation rate 2005 (incl. NI)	Participation rate 2004 (excl. NI)	Change (percentage points)	Significance
Any Activity	26.29%	24.97%	1.32%	98.0%
Any boating activity	6.85%	8.1%	-1.25%	99.8%
Canoeing	2.09%	2.7%	-0.61%	99.1%
Water skiing	0.77%	1.2%	-0.43%	99.6%
Small sail boat activities	1.12%	1.3%	-0.18%	69.9%
Rowing	0.99%	1.4%	-0.41%	98.7%
Windsurfing	0.58%	1.1%	-0.52%	100.0%
Using personal watercraft	0.78%	1.1%	-0.32%	96.8%
Motor boating/Cruising	1.19%	0.9%	0.29%	91.8%
Yacht cruising	0.66%	0.9%	-0.24%	92.8%
Power boating	0.76%	1.0%	-0.24%	91.0%
Small sail boat racing	0.30%	0.8%	-0.50%	100.0%
Canal boating	0.54%	0.7%	-0.16%	79.8%
Yacht racing	0.17%	0.3%	-0.13%	92.9%
Surfboarding	1.26%	1.2%	0.02%	9.5%
Kitesurfing	0.22%	0.2%	0.05%	62.6%
Angling (from a boat)	0.97%	1.3%	-0.36%	99.2%
Angling (from the shore)	1.93%	2.4%	-0.52%	99.4%
Cliff climbing	0.94%	1.1%	-0.16%	78.0%
Coastal walking	12.15%	10.5%	1.65%	100.0%
Outdoor swimming	10.59%	12.2%	-1.61%	100.0%
Leisure sub-aqua diving (from the shore and boat)	1.17%	1.5%	-0.35%	98.1%
Spending general leisure time at the beach	11.50%	10.2%	1.30%	99.9%
Base	12,191	5,967/11,504		

*Base size of 5,967 for BMF, RYA and Sunsail survey and 11,504 for MCA survey

Table 3 compares the participation rates as established in the 2005 survey with last year's participation rates. The 2004 figures with a yellow background (or light grey in black and white copies) are taken from the 2004 MCA report.

The 2005 data shows a decline in participation rates compared with 2004. Only 5 activities registered a rise in participation rates which are highlighted in bold above.

In interpreting the figures it is important to consider whether they reflect a real change in participation or a random fluctuation in the data. For example in 2004 we estimated canoeing participation at 2.7%, in 2005 we have estimated it at 2.09%. This is a decrease of 0.61 percentage points. As we are estimating the participation rate from a sample of the population small changes could be caused by random variation in the selected sample. However, if the level of change increases, the likelihood that it is caused by random variation declines and it is increasingly likely to reflect a real change. The figures in the column 'Significance Measure' indicate whether the observed changes are more likely to be real changes as opposed to sample error. The figures are highlighted in red and bold if the significance measure of the change is bigger than 90%, which indicates that the change is more likely a real change. Hence, the majority of changes (18 activities) are considered to reflect reality.

As mentioned before, the Omnibus in 2005 was extended to cover the whole of the UK, including Northern Ireland. To investigate if this has had any effect on participation rates, figures including and excluding respondents from Northern Ireland were compared (see Table 4). It also shows what actual numbers of participants that the participation rate translates to.

Table 4 Watersports and Leisure Participation 2005 (including and excluding Northern Ireland)

	Participation rate 2005 including Northern Ireland	Participation rate 2005 excluding Northern Ireland	Number of participants 2005 including Northern Ireland	Number of participants 2005 excluding Northern Ireland
Any Activity	26.29%	25.83%	12,579,516	11,990,659
Any boating activity	6.85%	6.85%	3,276,489	3,178,026
Canoeing	2.09%	2.09%	998,421	968,639
Water skiing	0.77%	0.76%	369,256	355,056
Small sail boat activities	1.12%	1.16%	537,677	537,677
Rowing	0.99%	1.00%	471,588	463,864
Windsurfing	0.58%	0.57%	275,367	263,742
Using personal watercraft	0.78%	0.76%	374,458	351,339
Motor boating/Cruising	1.19%	1.22%	567,271	567,271
Yacht cruising	0.66%	0.65%	314,554	300,834
Power boating	0.76%	0.75%	361,690	349,365
Small sail boat racing	0.30%	0.29%	144,425	136,820
Canal boating	0.54%	0.55%	260,761	257,178
Yacht racing	0.17%	0.16%	80,707	73,591
Surfboarding	1.26%	1.27%	600,728	588,071
Kitesurfing	0.22%	0.23%	105,409	105,409
Angling (from a boat)	0.97%	0.93%	464,490	430,982
Angling (from the shore)	1.93%	1.83%	922,113	851,031
Cliff climbing	0.94%	0.95%	449,283	442,319
Coastal walking	12.15%	11.97%	5,815,040	5,556,367
Outdoor swimming	10.59%	10.68%	5,070,088	4,957,992
Leisure sub-aqua diving (from the shore and boat)	1.17%	1.17%	558,087	544,197
Spending general leisure time at the beach	11.50%	11.29%	5,501,730	5,241,289
Base	12,191	11,844	47,858,000	46,422,715

This shows that for most activities there is not a lot of change in participation rates when excluding respondents from Northern Ireland. The biggest differences are recorded for Spending general leisure time at the beach and Coastal Walking (0.21% and 0.18% respectively). When looking at the "Any boating activity" variable there is no difference between UK and GB participation. Hence, examination of 2004 and 2005 data still offers useful insight.

Table 5 Participation in RYA interests 2005

Participation rate					Number of participants 2005 (incl.Northern Ireland)		Participation rate		Number of participants 2004 (excluding Northern Ireland)	
Min					Min 90%	Max 90%	Change (percentage points)		Min 90%	Max 90%
% for 2005					N	N	% for 2004		N	N
RYA sport	4.88%	4.50%	4.56%	5.20%	2,184,000	2,490,000	5.60%	-0.72	2,359,000	2,809,000
Base	12,191				47,858,000	47,858,000	5967		46,115,400	46,115,400

Base: all respondents (12,191)

Source: Watersports and Leisure Omnibus Survey – 2005

Table 5 shows the participation rate in activities of particular interest to the RYA, which have been combined into one variable. These are the original 12 activities bar rowing, water skiing, canoeing. In the 2004 BMF, RYA and Sunsail report this variable excluded canal boating, which was added in 2005. Therefore we re-analysed the 2004 data including canal boating to make it comparable.

Figure 1 shows graphically the participation rate in each surveyed activity.

Figure 1 Watersports and Leisure participation in 2005 of UK respondents

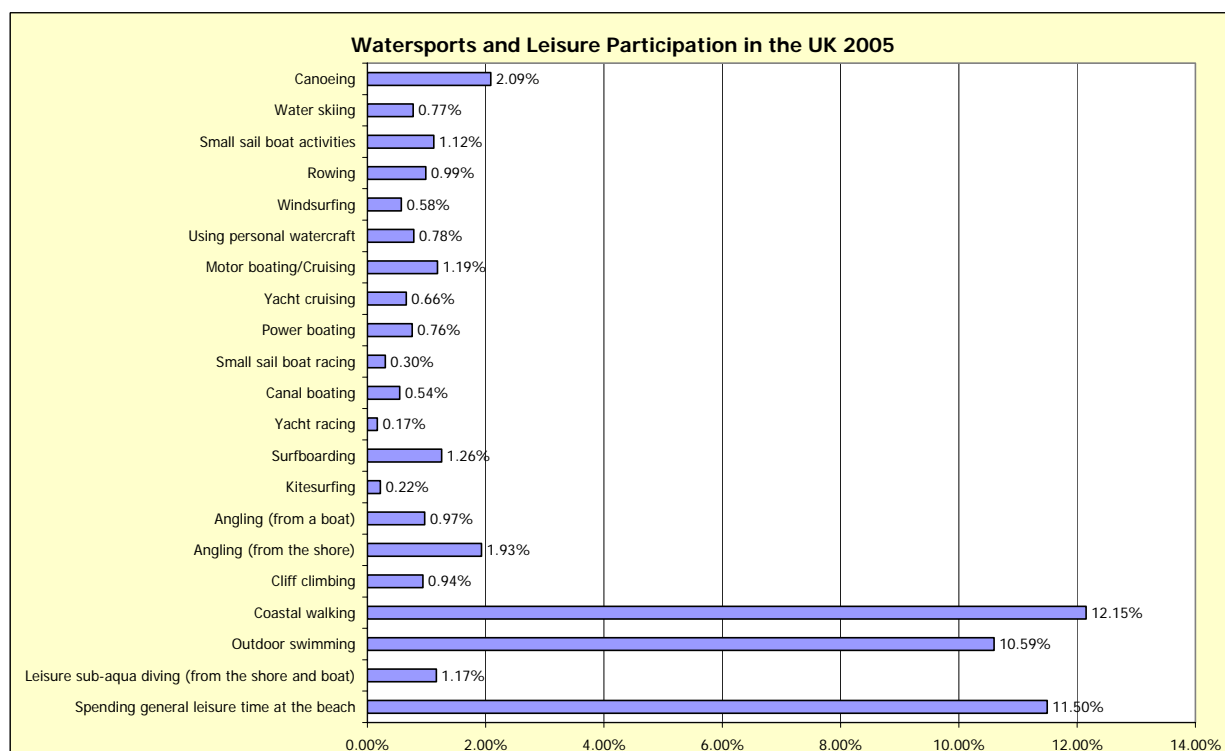
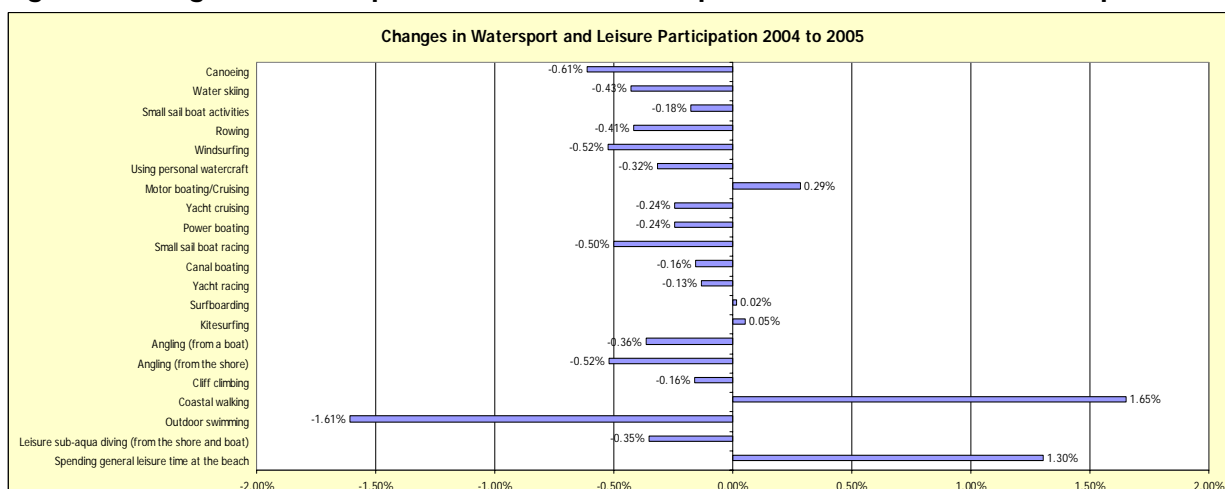


Figure 2 shows the change in participation rate for the activities from 2004 to 2005.

Figure 2 Changes in Watersports and Leisure Participation 2004 to 2005 of UK respondents



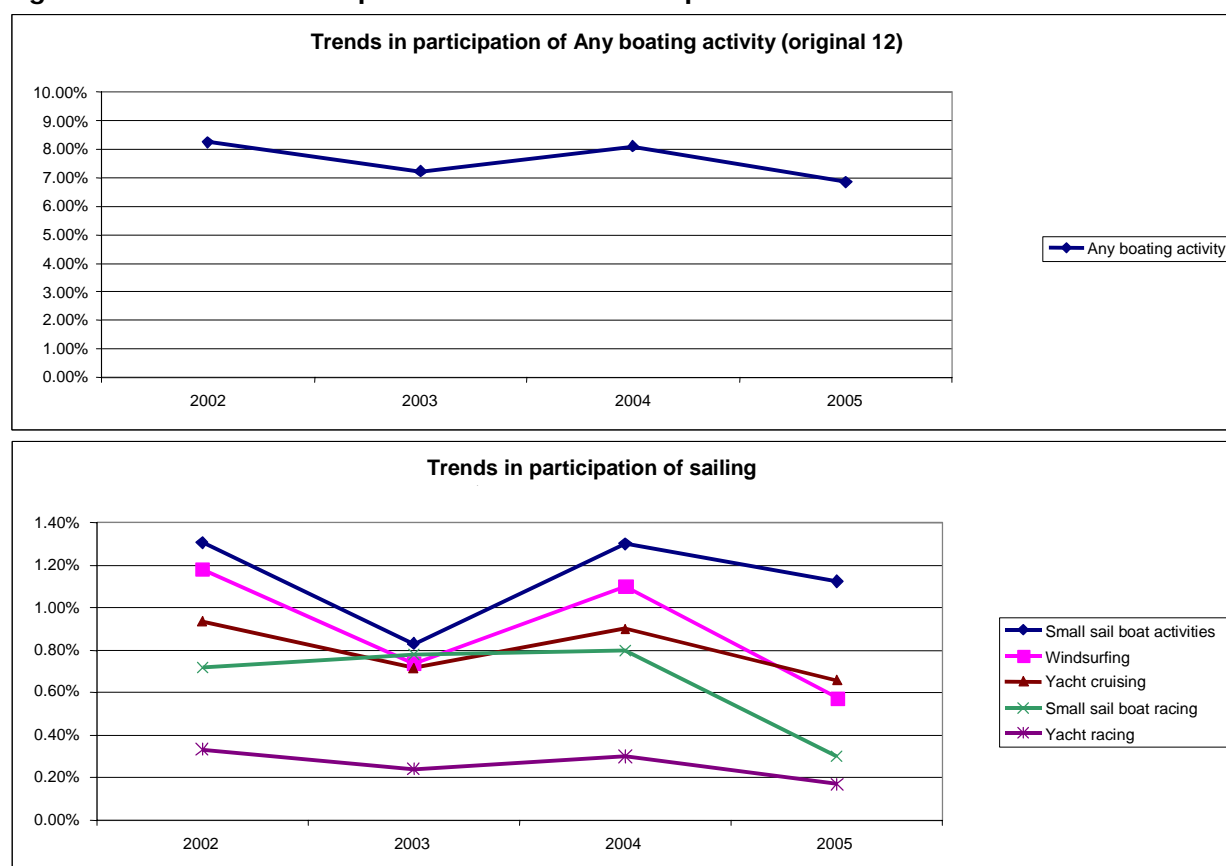
Emerging trends

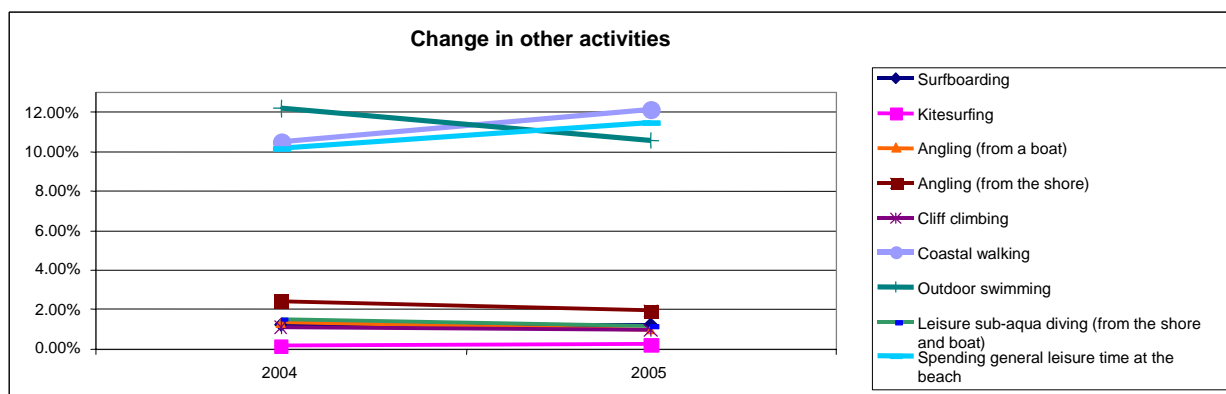
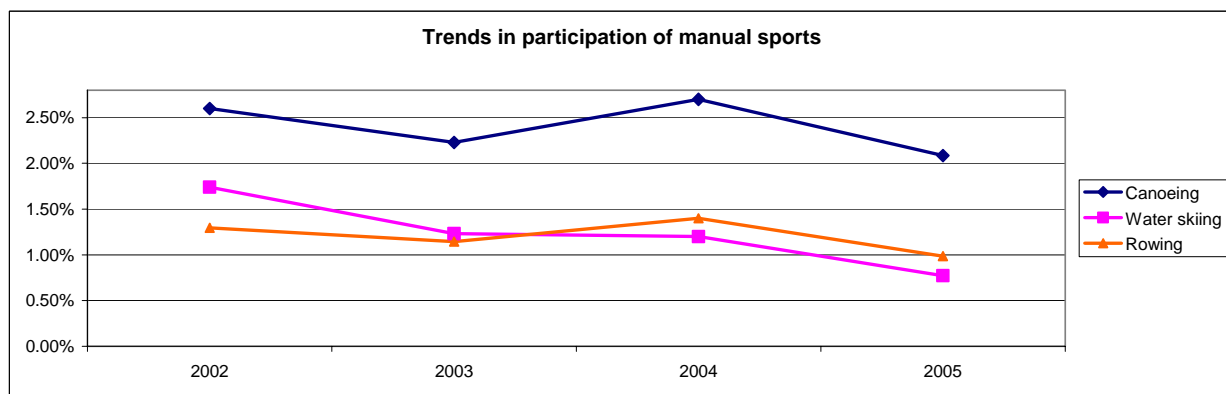
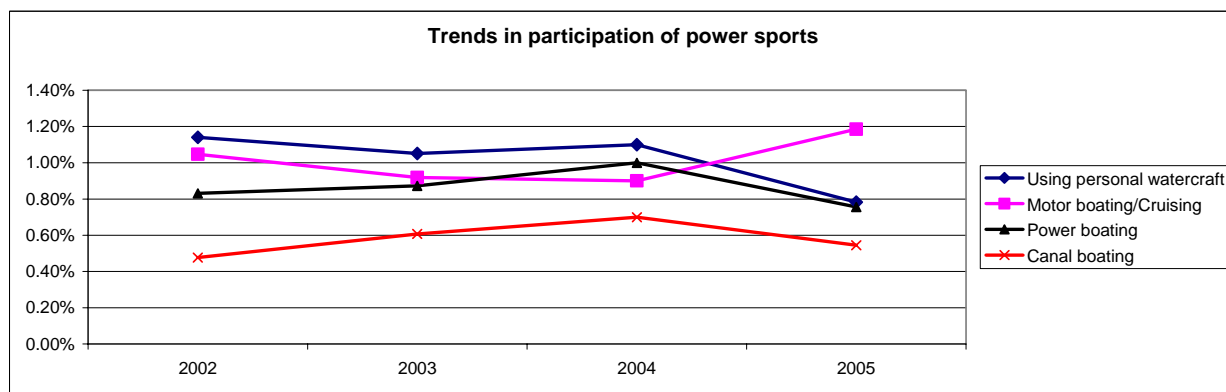
The following charts give insight into the participation trends for grouped activities from 2002 to 2005 and for “any boating activity” as a whole, covering the original 12 BMF, RYA and Sunsail activities. For the activities that were only added in 2004 we cannot provide any proper trends yet, but only charts showing their development over a 2 year period. The activities are grouped together into sailing sports (small sail boat racing, other small sail boat activities, yacht racing, yacht cruising and windsurfing), power sports (power boating, general motor boating, canal boating and using personal watercraft) and manual sports (canoeing, rowing and water-skiing).

Of the original 12 activities only Motor boating/cruising has seen a rise in participation levels in 2005. The other 11 original activities have seen a decline in participation rates. Participation rates in several activities are now close again to the level which was recorded in 2003.

Of the activities which are new to this survey in 2005, Spending general leisure time at the beach, Surfboarding, Kitesurfing and Coastal Walking have seen rises in participation levels in 2005.

Figure 3 Trends in Watersports and Leisure Participation in GB 2002 to 2005





3. Participation by Socio-Demographic Groups

The following tables show activity participation by age groups, gender and Socio-Economic Group (SEG). For each of these groups there are two tables. One showing the participation rates as a percentage and one that converts these percentages into actual participant numbers based on the overall **UK** adult population (those aged 16+), i.e. Great Britain and Northern Ireland.

Table 6 Participation by Gender

	Male	Female	Total UK
Any Activity	28.27%	24.44%	26.29%
Any boating activity	8.63%	5.19%	6.85%
Canoeing	2.87%	1.36%	2.09%
Water skiing	1.05%	0.52%	0.8%
Small sail boat activities	1.43%	0.84%	1.1%
Rowing	1.21%	0.78%	1.0%
Windsurfing	0.77%	0.40%	0.6%
Using personal watercraft	1.14%	0.45%	0.8%
Motor boating/Cruising	1.44%	0.95%	1.2%
Yacht cruising	0.92%	0.41%	0.7%
Power boating	1.03%	0.50%	0.8%
Small sail boat racing	0.39%	0.22%	0.3%
Canal boating	0.49%	0.60%	0.5%
Yacht racing	0.20%	0.14%	0.2%
Surfboarding	1.67%	0.87%	1.3%
Kitesurfing	0.39%	0.06%	0.2%
Angling (from a boat)	1.69%	0.31%	1.0%
Angling (from the shore)	3.50%	0.47%	1.9%
Cliff climbing	1.31%	0.59%	0.9%
Coastal walking	12.27%	12.04%	12.2%
Outdoor swimming	10.87%	10.34%	10.6%
Leisure sub-aqua diving (from the shore and boat)	1.72%	0.66%	1.2%
Spending general leisure time at the beach	10.62%	12.31%	11.5%
None	71.73%	75.56%	73.7%
Base	5,493	6,698	12,191

The above table shows that overall activity rates for men and women are quite similar (28% for men and 24% for women). However, males are more likely to participate in nearly all the surveyed activities than women. Only the participation rate for canal boating and spending general leisure time at the beach is higher for women than for men.

The gap between male and female participation is largest in specialist sports. We have highlighted the male participation rate for an activity in blue and bold, if it is more than two times the female participation rate.

Table 7 Participation by Gender – Participant Numbers

	Male	Female	Total UK
Any Activity	6,508,320	6,071,197	12,579,517
Any boating activity	1,987,226	1,289,263	3,276,489
Canoeing	661,699	336,722	998,421
Water skiing	241,236	128,020	369,256
Small sail boat activities	329,251	208,425	537,677
Rowing	277,890	193,698	471,588
Windsurfing	176,609	98,758	275,367
Using personal watercraft	263,253	111,205	374,458
Motor boating/Cruising	331,160	236,111	567,271
Yacht cruising	212,546	102,008	314,554
Power boating	238,076	123,613	361,690
Small sail boat racing	89,735	54,690	144,425
Canal boating	112,019	148,742	260,761
Yacht racing	45,668	35,039	80,707
Surfboarding	385,077	215,651	600,728
Kitesurfing	90,009	15,399	105,409
Angling (from a boat)	388,041	76,449	464,490
Angling (from the shore)	804,899	117,214	922,114
Cliff climbing	302,201	147,082	449,283
Coastal walking	2,824,862	2,990,178	5,815,041
Outdoor swimming	2,502,773	2,567,314	5,070,088
Leisure sub-aqua diving (from the shore and boat)	394,888	163,198	558,087
Spending general leisure time at the beach	2,443,711	3,058,019	5,501,730
None	16,512,575	18,765,909	35,278,485
Base	5,493	6,698	12,191

Table 8 Participation by age groups

	Age groups			Total UK
	16-34	35-54	55+	
Any Activity	31.98%	30.14%	17.36%	26.29%
Any boating activity	11.44%	7.01%	2.74%	6.85%
Canoeing	4.32%	1.90%	0.37%	2.09%
Water skiing	1.59%	0.79%	0.05%	0.77%
Small sail boat activities	1.67%	1.01%	0.78%	1.12%
Rowing	1.91%	0.97%	0.21%	0.99%
Windsurfing	1.15%	0.63%	0.03%	0.58%
Using personal watercraft	1.51%	0.82%	0.12%	0.78%
Motor boating/Cruising	1.52%	1.56%	0.51%	1.19%
Yacht cruising	0.60%	0.82%	0.54%	0.66%
Power boating	1.25%	0.82%	0.27%	0.76%
Small sail boat racing	0.57%	0.23%	0.15%	0.30%
Canal boating	0.63%	0.45%	0.57%	0.54%
Yacht racing	0.12%	0.26%	0.11%	0.17%
Surfboarding	2.69%	1.16%	0.13%	1.26%
Kitesurfing	0.54%	0.16%	0.00%	0.22%
Angling (from a boat)	1.10%	1.36%	0.45%	0.97%
Angling (from the shore)	2.21%	2.82%	0.75%	1.93%
Cliff climbing	2.19%	0.75%	0.06%	0.94%
Coastal walking	10.89%	15.39%	9.84%	12.15%
Outdoor swimming	14.91%	12.64%	4.74%	10.59%
Leisure sub-aqua diving (from the shore and boat)	2.04%	1.28%	0.30%	1.17%
Spending general leisure time at the beach	12.82%	14.38%	7.34%	11.50%
None	68.02%	69.86%	82.64%	73.71%
Base	3,534	4,081	4,576	12,191

The data suggests that generally a higher proportion of the younger age groups are participating in the surveyed activities. Activity rates in the active water based activities (e.g. Cliff climbing, Surfboarding) decline earlier, while the participation rate for “any activity” shows a big decline after the age of 55.

We have highlighted activities in blue and bold where the participation rate is substantially higher in the 35-54 age group than in the 16-34 age group. Canal boating is the only activity with a participation rate higher amongst 55+ year olds than 35-54 year olds, though still highest for the youngest age group.

Table 9 Participation by age groups – Participant numbers

	Age groups			Total UK
	16-34	35-54	55+	
Any Activity	4,518,450	5,201,123	2,859,944	12,579,517
Any boating activity	1,615,611	1,210,012	450,866	3,276,489
Canoeing	609,731	327,309	61,381	998,421
Water skiing	223,947	136,998	8,312	369,256
Small sail boat activities	236,022	173,608	128,047	537,677
Rowing	270,336	167,462	33,789	471,588
Windsurfing	162,757	107,940	4,671	275,367
Using personal watercraft	212,895	141,568	19,995	374,458
Motor boating/Cruising	214,248	268,940	84,083	567,271
Yacht cruising	84,075	141,504	88,974	314,554
Power boating	176,471	140,737	44,481	361,690
Small sail boat racing	80,896	38,852	24,677	144,425
Canal boating	89,237	77,851	93,673	260,761
Yacht racing	17,415	45,471	17,820	80,707
Surfboarding	379,625	199,410	21,693	600,728
Kitesurfing	76,981	28,428	-	105,409
Angling (from a boat)	155,226	234,984	74,281	464,490
Angling (from the shore)	312,266	487,116	122,732	922,114
Cliff climbing	309,470	129,926	9,887	449,283
Coastal walking	1,538,079	2,656,314	1,620,647	5,815,041
Outdoor swimming	2,106,435	2,182,289	781,364	5,070,088
Leisure sub-aqua diving (from the shore and boat)	287,625	221,223	49,238	558,087
Spending general leisure time at the beach	1,810,791	2,481,641	1,209,299	5,501,730
None	9,609,976	12,058,085	13,610,424	35,278,485
Base	3,534	4,081	4,576	12,191

The larger number of people in the older age groups reduces the absolute differences, for example the number of people participating in “any activity” is higher in the 35-54 age group despite the fact that 16-34 year olds have a higher participation rate in percent.

Table 10 Participation by SEG*

	SEG			
	AB	C1	C2DE*	Total UK
Any Activity	38.82%	30.45%	19.40%	26.29%
Any boating activity	11.68%	9.22%	3.76%	6.85%
Canoeing	3.43%	2.77%	1.21%	2.09%
Water skiing	1.05%	1.32%	0.36%	0.77%
Small sail boat activities	2.21%	1.47%	0.53%	1.12%
Rowing	1.81%	1.19%	0.57%	0.99%
Windsurfing	1.20%	0.87%	0.19%	0.58%
Using personal watercraft	1.19%	1.19%	0.41%	0.78%
Motor boating/Cruising	2.17%	1.45%	0.68%	1.19%
Yacht cruising	2.01%	0.72%	0.13%	0.66%
Power boating	1.09%	1.07%	0.46%	0.76%
Small sail boat racing	0.58%	0.45%	0.12%	0.30%
Canal boating	0.99%	0.65%	0.32%	0.54%
Yacht racing	0.48%	0.19%	0.05%	0.17%
Surfboarding	2.51%	1.66%	0.58%	1.26%
Kitesurfing	0.22%	0.42%	0.11%	0.22%
Angling (from a boat)	0.86%	0.97%	1.01%	0.97%
Angling (from the shore)	1.80%	1.88%	2.00%	1.93%
Cliff climbing	1.25%	1.26%	0.65%	0.94%
Coastal walking	19.89%	14.76%	7.88%	12.15%
Outdoor swimming	16.88%	12.87%	7.04%	10.59%
Leisure sub-aqua diving (from the shore and boat)	1.82%	1.66%	0.65%	1.17%
Spending general leisure time at the beach	19.01%	13.04%	7.90%	11.50%
None	61.18%	69.55%	80.60%	73.71%
Base	1,997	3,006	7,188	12,191

The socio-economic groups AB have generally a substantially higher participation rate than the other groups. Participation rates have been highlighted in blue and bold, where this is not the case, i.e. the highest participation rate is in either the C1 or C2DE socio-economic groups. This is the case, for example, for angling, whether it be from the shore or the boat, where the highest participation rate is within the C2DE economic grouping.

* The number for C2DE includes retired

Table 11 Participation by SEG – Participant Numbers

	SEG			
	AB	C1	C2DE	Total UK
Any Activity	3,524,716	4,220,646	4,834,154	12,579,517
Any boating activity	1,060,829	1,278,388	937,272	3,276,489
Canoeing	311,584	384,206	302,631	998,421
Water skiing	95,329	183,421	90,506	369,256
Small sail boat activities	200,844	204,173	132,660	537,677
Rowing	164,241	164,293	143,054	471,588
Windsurfing	109,139	119,952	46,276	275,367
Using personal watercraft	108,200	165,132	101,126	374,458
Motor boating/Cruising	197,095	201,264	168,912	567,271
Yacht cruising	182,747	100,423	31,384	314,554
Power boating	98,730	147,704	115,256	361,690
Small sail boat racing	52,654	61,717	30,054	144,425
Canal boating	89,665	90,801	80,295	260,761
Yacht racing	43,233	25,768	11,705	80,707
Surfboarding	227,839	229,494	143,395	600,728
Kitesurfing	19,947	58,074	27,387	105,409
Angling (from a boat)	78,345	134,147	251,998	464,490
Angling (from the shore)	163,614	261,248	497,251	922,114
Cliff climbing	113,528	174,054	161,702	449,283
Coastal walking	1,805,635	2,046,454	1,962,952	5,815,041
Outdoor swimming	1,532,933	1,783,757	1,753,398	5,070,088
Leisure sub-aqua diving (from the shore and boat)	165,479	229,679	162,929	558,087
Spending general leisure time at the beach	1,726,383	1,808,131	1,967,216	5,501,730
None	5,554,390	9,642,145	20,081,949	35,278,485
Base	1,997	3,006	7,188	12,191

The much greater number of people in the C1 socio-economic group compared to those in the AB group means that despite lower participation rate, they are often the largest population group in absolute numbers. For example, the percentage using personal watercraft is 1.19% for both AB and C1 groups, however this equates to 108,200 and 165,132 people respectively.

Table 12 Participation by Working Status

	Working status			Total UK
	Working	Retired	Other non-working	
Any Activity	32.01%	14.92%	25.01%	26.29%
Any boating activity	9.10%	1.85%	6.85%	6.85%
Canoeing	2.69%	0.26%	2.58%	2.09%
Water skiing	1.07%	0.05%	0.82%	0.77%
Small sail boat activities	1.50%	0.38%	1.05%	1.12%
Rowing	1.33%	0.13%	1.07%	0.99%
Windsurfing	0.85%	0.00%	0.54%	0.58%
Using personal watercraft	1.02%	0.08%	0.96%	0.78%
Motor boating/Cruising	1.66%	0.40%	0.93%	1.19%
Yacht cruising	0.85%	0.52%	0.36%	0.66%
Power boating	1.10%	0.17%	0.59%	0.76%
Small sail boat racing	0.29%	0.07%	0.56%	0.30%
Canal boating	0.66%	0.30%	0.52%	0.54%
Yacht racing	0.20%	0.10%	0.16%	0.17%
Surfboarding	1.84%	0.08%	1.15%	1.26%
Kitesurfing	0.23%	0.00%	0.41%	0.22%
Angling (from a boat)	1.35%	0.35%	0.74%	0.97%
Angling (from the shore)	2.56%	0.62%	1.84%	1.93%
Cliff climbing	1.19%	0.00%	1.32%	0.94%
Coastal walking	14.92%	8.52%	9.66%	12.15%
Outdoor swimming	13.47%	3.57%	11.25%	10.59%
Leisure sub-aqua diving (from the shore and boat)	1.86%	0.10%	0.70%	1.17%
Spending general leisure time at the beach	14.32%	6.42%	10.33%	11.50%
None	67.99%	85.08%	74.99%	73.71%
Base	5,798	3,358	3,035	12,191

When looking at the participation by working status the participation rate of those working is higher than retired and non-working groups. Retired people are least active. This is likely to reflect the age of the different groups.

Table 13 Participation by working status – Participant numbers

	Working status			Total UK
	Working	Retired	Other non-working	
Any Activity	8,033,756	1,693,232	2,852,528	12,579,517
Any boating activity	2,285,354	209,813	781,322	3,276,489
Canoeing	674,606	29,880	293,934	998,421
Water skiing	269,635	5,872	93,750	369,256
Small sail boat activities	375,710	42,648	119,318	537,677
Rowing	334,745	14,512	122,331	471,588
Windsurfing	213,568	-	61,799	275,367
Using personal watercraft	255,897	8,539	110,021	374,458
Motor boating/Cruising	415,784	45,788	105,699	567,271
Yacht cruising	214,156	58,866	41,532	314,554
Power boating	275,827	18,808	67,054	361,690
Small sail boat racing	73,216	7,452	63,757	144,425
Canal boating	166,869	34,508	59,385	260,761
Yacht racing	51,388	10,885	18,433	80,707
Surfboarding	461,303	8,640	130,784	600,728
Kitesurfing	58,387	-	47,022	105,409
Angling (from a boat)	340,103	40,248	84,139	464,490
Angling (from the shore)	641,459	70,934	209,721	922,114
Cliff climbing	298,835	-	150,449	449,283
Coastal walking	3,745,626	967,443	1,101,972	5,815,041
Outdoor swimming	3,381,598	404,955	1,283,534	5,070,088
Leisure sub-aqua diving (from the shore and boat)	466,406	11,695	79,986	558,087
Spending general leisure time at the beach	3,594,848	728,898	1,177,984	5,501,730
None	17,066,787	9,656,935	8,554,763	35,278,485
Base	5,798	3,358	3,035	12,191

The following tables show the participation rates for the individual activities by lifestage. The life stage definitions have been constructed from the information available and are defined as below. Some of the definitions have changed slightly and other categories added compared to previous years, to accommodate respondents who didn't fit into one of the existing categories.

Figure 4 Life stage explanation

Life Stage	Definition
Student/Workers house share	Two or more adults not living as a couple, without children (up to the age of 64).
Single	One person living alone either single/widowed/divorced/separated.
Couple under 55	Two married or living as married no children and under 55.
Single parents	One adult with one or more child/children in household.
Family	Household of more than 2 people with children.
Household with 2 adults and children	Household with 2 adults who are not registered as married or living together as married, with children in household
Empty nesters	Two people 55 to 65 living in house with no children
Greys	Two or more people living over 64 living in house with no children or living alone and over 64

Table 14 Participation by lifestage

	Lifestage							Total UK
	Student/Workers house share	Single	Couple under 55	Family	Household with 2 adults and children	Empty Nesters	Greys	
Any Activity	29.90%	25.54%	31.95%	31.03%	28.89%	25.95%	11.88%	26.29%
Any boating activity	11.95%	6.31%	9.39%	6.55%	10.24%	5.02%	1.52%	6.85%
Canoeing	5.42%	2.01%	2.80%	1.58%	3.23%	0.95%	0.09%	2.09%
Water skiing	1.73%	0.49%	0.93%	0.75%	1.63%	0.14%	0.03%	0.77%
Small sail boat activities	1.34%	1.24%	1.19%	1.21%	1.91%	0.89%	0.44%	1.12%
Rowing	1.81%	1.00%	1.22%	0.99%	1.79%	0.29%	0.16%	0.99%
Windsurfing	1.73%	0.68%	0.63%	0.48%	0.77%	0.00%	0.00%	0.58%
Using personal watercraft	1.48%	0.71%	1.35%	0.78%	1.11%	0.28%	0.04%	0.78%
Motor boating/Cruising	1.82%	0.36%	1.65%	1.56%	1.16%	1.54%	0.15%	1.19%
Yacht cruising	0.61%	0.82%	1.28%	0.50%	0.50%	0.99%	0.38%	0.66%
Power boating	1.21%	0.80%	1.27%	0.85%	0.82%	0.40%	0.07%	0.76%
Small sail boat racing	0.68%	0.54%	0.17%	0.24%	0.53%	0.18%	0.03%	0.30%
Canal boating	0.46%	0.41%	0.66%	0.50%	0.67%	1.13%	0.34%	0.54%
Yacht racing	0.17%	0.53%	0.20%	0.11%	0.13%	0.00%	0.15%	0.17%
Surfboarding	2.70%	1.35%	1.85%	1.13%	2.02%	0.28%	0.07%	1.26%
Kitesurfing	0.74%	0.00%	0.25%	0.19%	0.43%	0.00%	0.00%	0.22%
Angling (from a boat)	1.10%	1.09%	1.56%	1.21%	0.87%	0.79%	0.21%	0.97%
Angling (from the shore)	2.28%	2.32%	2.08%	2.70%	2.06%	0.92%	0.57%	1.93%
Cliff climbing	2.16%	1.00%	1.28%	0.81%	1.80%	0.10%	0.00%	0.94%
Coastal walking	9.96%	13.54%	14.81%	15.12%	9.38%	14.97%	6.68%	12.15%
Outdoor swimming	14.61%	8.26%	11.96%	13.88%	14.34%	7.44%	2.55%	10.59%
Leisure sub-aqua diving (from the shore and boat)	1.77%	1.50%	2.59%	0.96%	1.50%	0.57%	0.08%	1.17%
Spending general leisure time at the beach	10.71%	10.13%	14.04%	15.71%	11.88%	10.35%	4.87%	11.50%
None	70.10%	74.46%	68.05%	68.97%	71.11%	74.05%	88.12%	73.71%
Base	1,443	1,180	1,312	3,301	1,232	936	2,787	12,191

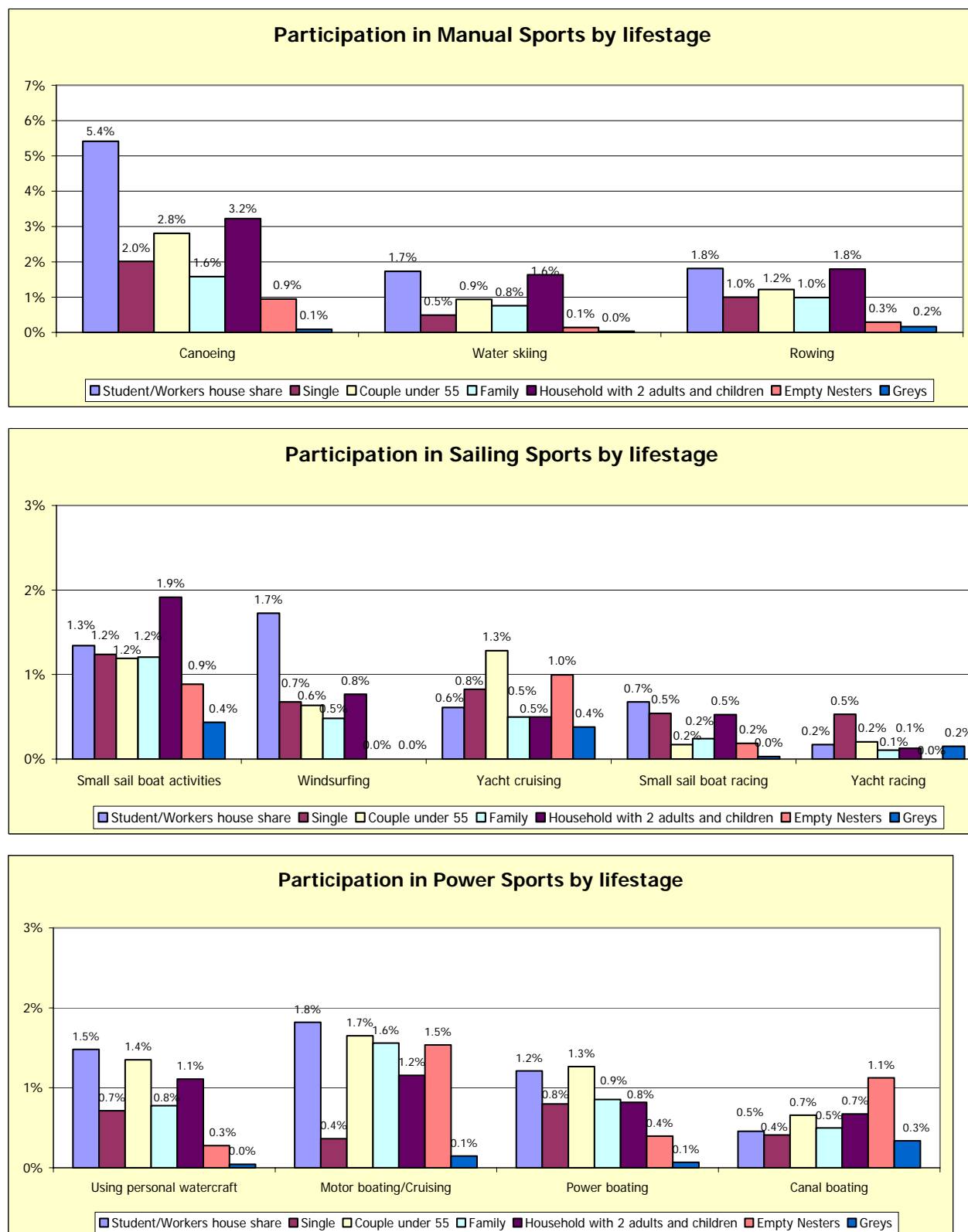
Families record the highest participation for spending general leisure time at the beach when comparing to the other lifestage groups. For the very active activities like Surfboarding, Windsurfing and Cliff climbing the lifestage group with the highest participation rate are those in a student/workers houseshare.

Table 15 Participation by lifestage – Participant numbers

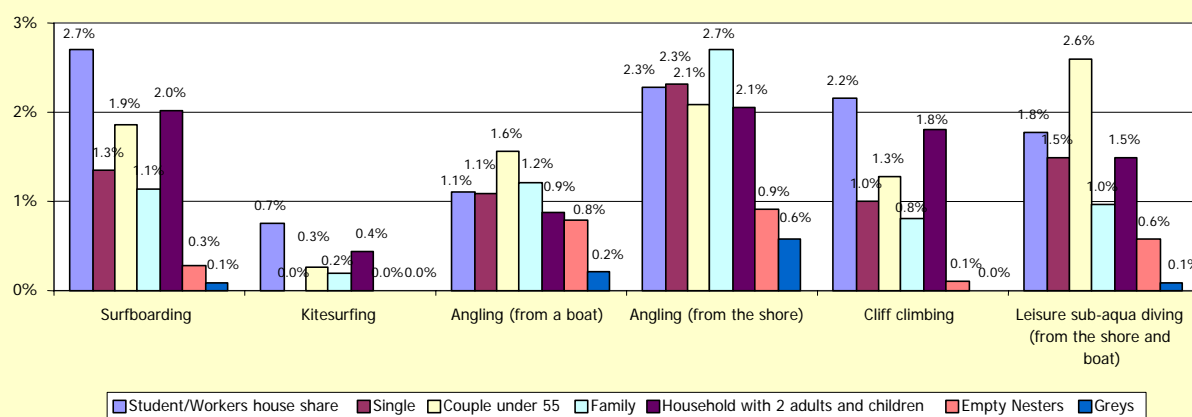
	Lifestage							Total UK
	Student/Workers house share	Single	Couple under 55	Family	Household with 2 adults and children	Empty Nesters	Greys	
Any Activity	1,834,587	1,213,293	1,791,293	4,297,423	1,321,994	1,075,581	1,045,346	12,579,517
Any boating activity	733,298	299,708	526,630	906,834	468,541	207,872	133,606	3,276,489
Canoeing	332,355	95,531	157,208	218,509	147,621	39,291	7,906	998,421
Water skiing	106,150	23,158	52,301	104,535	74,800	5,872	2,440	369,256
Small sail boat activities	82,341	58,749	66,797	167,119	87,590	36,763	38,317	537,677
Rowing	111,138	47,357	68,191	136,620	82,144	12,060	14,078	471,588
Windsurfing	105,859	32,163	35,537	66,737	35,071	-	-	275,367
Using personal watercraft	90,870	33,963	75,784	107,736	50,781	11,456	3,869	374,458
Motor boating/Cruising	111,680	17,288	92,557	216,061	52,912	63,764	13,008	567,271
Yacht cruising	37,459	39,186	71,806	68,844	22,818	41,227	33,214	314,554
Power boating	74,402	37,954	70,977	118,375	37,518	16,420	6,044	361,690
Small sail boat racing	41,545	25,658	9,604	33,304	24,043	7,642	2,628	144,425
Canal boating	28,074	19,522	36,849	69,043	30,839	46,658	29,776	260,761
Yacht racing	10,479	25,132	11,305	14,688	5,778	-	13,326	80,707
Surfboarding	165,389	63,967	103,934	157,071	92,366	11,591	6,410	600,728
Kitesurfing	45,483	-	14,136	26,032	19,757	-	-	105,409
Angling (from a boat)	67,429	51,636	87,453	166,993	39,710	32,682	18,587	464,490
Angling (from the shore)	139,650	110,212	116,826	373,210	94,368	37,964	49,884	922,114
Cliff climbing	132,344	47,380	71,493	111,535	82,516	4,015	-	449,283
Coastal walking	611,223	642,962	830,410	2,093,106	429,113	620,496	587,731	5,815,041
Outdoor swimming	896,253	392,529	670,714	1,921,939	656,294	308,339	224,018	5,070,088
Leisure sub-aqua diving (from the shore and boat)	108,721	71,057	145,448	133,300	68,526	23,690	7,346	558,087
Spending general leisure time at the beach	657,226	481,251	787,141	2,175,011	543,474	429,057	428,569	5,501,730
None	4,301,935	3,536,862	3,815,892	9,550,032	3,254,432	3,068,629	7,750,703	35,278,485
Base	1,443	1,180	1,312	3,301	1,232	936	2,787	12,191

Figure 5 Shows the participation for the individual activities by lifestage in a graphical format.

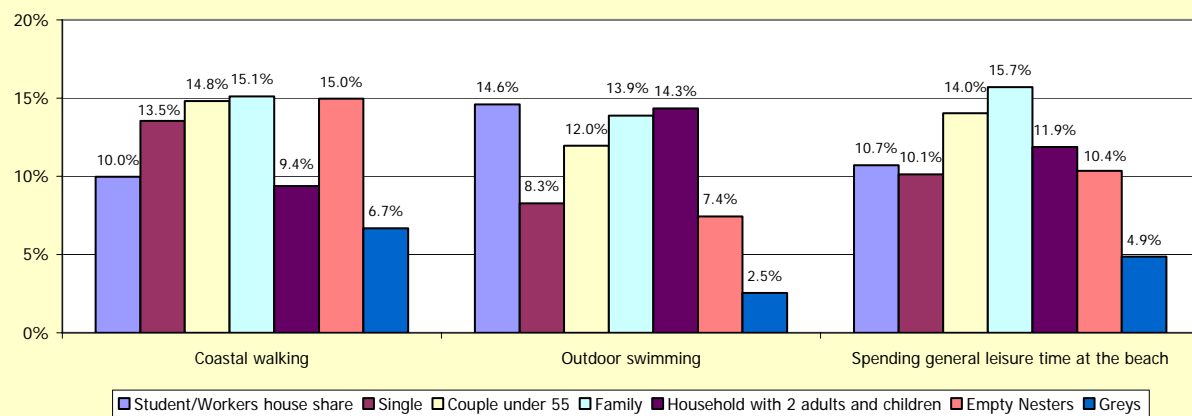
Figure 5 Participation in surveyed activities by lifestage



Participation in other activities by lifestage (1)



Participation in other activities by lifestage (2)



Participation by Socio-Demographic Groups Using watersports categories

Table 16 and Table 17 show the profile of people participating in grouped watersport activities by sex, age groups, SEG, ITV regions and lifestage. These tables were part of the previous BMF, RYA and Sunsail reports and have been included again for comparability to previous reports.

By aggregating the activities into only 3 categories we can provide more robust estimates of the socio-demographic participation. Only the original 12 activities have been grouped and included to enable comparison with the previous BMF, RYA, and Sunsail reports.

We have compared the figures from 2005 with the figures of the 2004 BMF, RYA and Sunsail report. Significant rises are highlighted with an orange background (or darker grey in black and white copies) and significant falls are highlighted with a light blue background (or light grey in black and white copies). It shows that there were only significant rises for the 55+ age group and the lifestage groups of "Greys" in the Power Sports category. As in previous years Males, 16-34 year olds and those belonging to the AB social-economic grouping record the highest participation rates. When looking at the ITV regions the results are also consistent with previous years, with respondents from the Wales/West/South West regions having higher participation rates than respondents from the other regions. N.B. Actual numbers of participants are higher in London/East /South East due to the larger population in this ITV region.

Figure 6 Activities categories

Sailing sports	Small sail boat racing, small sail boat activities, yacht racing, yacht cruising and windsurfing
Power Sports	Power boating, motor boating/cruising, canal boating and using personal watercraft
Manual sports	Canoeing, rowing and water skiing

Table 16 Participation in watersports categories by socio-demographic groups

		Watersport category				UK Population	Base
		Any boating activity	Sail	Power	Manual		
Sex	Male	8.63%	2.96%	3.69%	4.46%	23,020,895	5,493
	Female	5.19%	1.72%	2.18%	2.45%	24,837,106	6,698
Age Group	16-34	11.44%	3.26%	4.26%	6.99%	14,128,426	3,534
	35-54	7.01%	2.44%	3.25%	3.20%	17,259,208	4,081
	55+	2.74%	1.39%	1.37%	0.58%	16,470,367	4,576
SEG	AB	11.68%	5.31%	4.67%	5.42%	9,079,106	1,997
	C1	9.22%	2.88%	3.97%	4.76%	13,862,792	3,006
	C2DE	3.76%	0.92%	1.67%	1.93%	24,916,103	7,188
Working status	Working	9.10%	3.16%	3.94%	4.54%	25,100,542	5,798
	Retired	1.85%	0.92%	0.86%	0.39%	11,350,167	3,358
	Other non-working	6.85%	1.86%	2.67%	3.94%	11,407,291	3,035
ITV regions	London/ East/ South East	7.51%	2.84%	3.22%	3.51%	14,819,116	4,048
	Wales/ West/ South West	8.43%	3.08%	3.57%	3.71%	4,557,644	1,228
	Midlands	7.11%	2.36%	2.86%	4.06%	7,371,327	1,815
	North West/ North East/ Yorkshire	6.31%	1.85%	2.77%	3.29%	15,458,082	3,706
	Border/ Scotland	4.29%	1.51%	1.68%	2.07%	4,216,545	1,047
Life stage	Northern Ireland	6.86%	1.80%	2.72%	3.42%	1,435,286	347
	Student/Workers house share	11.95%	3.19%	4.27%	7.91%	6,136,522	1,443
	Single	6.31%	3.00%	2.09%	3.26%	4,750,154	1,180
	Couple under 55	9.39%	3.02%	4.19%	4.25%	5,607,185	1,312
	Family	6.55%	2.12%	3.29%	2.98%	13,847,455	3,301
	Household with 2 adults and childre	10.24%	3.35%	3.46%	5.89%	4,576,425	1,232
	Empty Nesters	5.02%	1.91%	3.14%	1.24%	4,144,210	936
	Greys	1.52%	0.87%	0.56%	0.25%	8,796,050	2,787
Total	Total	6.85%	2.32%	2.90%	3.41%	47,858,001	12,191

The only groups in which all grouped activities significantly declined are Males, 35-54s and ABs. In 2004 these 3 groups had all seen significant rises in participations compared to 2003 in at least one activity.

Table 17 Participation in watersports categories by socio-demographic groups – Participant numbers

		Watersport category					Base
		Any boating activity	Sail	Power	Manual	UK Population	
Sex	Male	1,987,226	681,961	849,037	1,026,035	23,020,895	5,493
	Female	1,289,263	428,276	540,495	607,854	24,837,106	6,698
Age Group	16-34	1,615,611	460,447	602,396	986,888	14,128,426	3,534
	35-54	1,210,012	420,643	560,995	551,831	17,259,208	4,081
SEG	55+	450,866	229,147	226,142	95,170	16,470,367	4,576
	AB	1,060,829	482,415	423,703	492,487	9,079,106	1,997
	C1	1,278,388	399,397	550,384	660,231	13,862,792	3,006
	C2DE	937,272	228,424	415,446	481,171	24,916,103	7,188
Working status	Working	2,285,354	793,712	988,424	1,139,701	25,100,542	5,798
	Retired	209,813	104,142	97,046	44,392	11,350,167	3,358
	Other non-working	781,322	212,382	304,062	449,797	11,407,291	3,035
ITV regions	London/ East/ South East	1,113,605	420,233	477,352	520,598	14,819,116	4,048
	Wales/ West/ South West	384,151	140,387	162,612	169,266	4,557,644	1,228
	Midlands	524,390	174,305	211,031	299,430	7,371,327	1,815
	North West/ North East/ Yorkshire	975,043	285,992	428,589	508,285	15,458,082	3,706
	Border/ Scotland	180,837	63,486	70,923	87,259	4,216,545	1,047
	Northern Ireland	98,463	25,835	39,025	49,051	1,435,286	347
Life stage	Student/Workers house share	733,298	195,563	262,004	485,455	6,136,522	1,443
	Single	299,708	142,461	99,379	154,992	4,750,154	1,180
	Couple under 55	526,630	169,472	235,073	238,309	5,607,185	1,312
	Family	906,834	293,352	455,332	412,382	13,847,455	3,301
	Household with 2 adults and childre	468,541	153,535	158,169	269,417	4,576,425	1,232
	Empty Nesters	207,872	79,066	129,930	51,350	4,144,210	936
	Greys	133,606	76,788	49,644	21,984	8,796,050	2,787
Total	Total	3,276,489	1,110,237	1,389,532	1,633,890	47,858,001	12,191

4. Regional Participation

Table 18 provides an indication of the variations in participation by residential area of the country in 2005. ITV regions have been grouped to provide more robust sample sizes and therefore more robust estimates of participation. However, it must still be considered that the sample sizes in each grouped region are still relatively small varying between 347 and 4,048 across all activities. This means we can provide an indication of participation rates by region, but the statistics are less reliable than the national estimates.

We have highlighted participation rates where changes are statistically significant compared with 2004. The darker grey (or orange in colour copies) is used to indicate apparent rises in the participation the lighter grey (or blue) to indicate an apparent decline. However, the small numbers in each region for an individual sport mean that the data should be treated with caution. For the comparison with 2004 we used the figures from the BMF, RYA and Sunsail 2004 survey for the original 12 activities, and for the additional activities we used the figures from the MCA 2004 survey. We do not have any comparative data for Northern Ireland, as it was added as a new region in the 2005 survey. The numbers of respondents in each region are provided at the bottom of the table. The regions are defined as follows:

Figure 7 ITV regions

South East and East England	South, South East, East and London ITV regions (covered by Meridian, LWT & Carlton and Anglia)
The West	Wales, South West and West ITV regions (covered by West country, HTV and Central)
Midlands	Midlands ITV region (covered by Central)
Northern England	North West, North East and Yorkshire ITV regions (covered by Granada, Yorkshire and Tyne Tees)
Scotland	Border and Scotland ITV regions (covered by Grampian, Scottish and Border)
Northern Ireland	Northern Ireland

Table 18 Watersports and Leisure participation rates by ITV regions 2005

	ITV regions						
	London/ East/ South East	Wales/ West/ South West	Midlands	North West/ North East/ Yorkshire	Border/ Scotland	Northern Ireland	All regions
Any Activity	25.16%	40.91%	25.28%	24.10%	19.19%	41.03%	26.29%
Any boating activity	7.51%	8.43%	7.11%	6.31%	4.29%	6.86%	6.85%
Canoeing	1.66%	2.66%	2.38%	2.32%	1.59%	2.07%	2.09%
Water skiing	1.15%	0.36%	0.80%	0.54%	0.59%	0.99%	0.77%
Small sail boat activities	1.11%	1.53%	1.31%	1.01%	1.20%	0.00%	1.12%
Rowing	1.23%	1.21%	1.22%	0.79%	0.33%	0.54%	0.99%
Windsurfing	0.79%	0.56%	0.62%	0.46%	0.11%	0.81%	0.58%
Using personal watercraft	0.90%	0.69%	0.60%	0.76%	0.57%	1.61%	0.78%
Motor boating/Cruising	1.53%	1.61%	0.95%	1.04%	0.86%	0.00%	1.19%
Yacht cruising	1.00%	1.35%	0.48%	0.34%	0.08%	0.96%	0.66%
Power boating	0.91%	0.88%	0.50%	0.72%	0.62%	0.86%	0.76%
Small sail boat racing	0.41%	0.15%	0.25%	0.23%	0.39%	0.53%	0.30%
Canal boating	0.43%	0.67%	1.10%	0.53%	0.00%	0.25%	0.54%
Yacht racing	0.14%	0.48%	0.15%	0.11%	0.09%	0.50%	0.17%
Surfboarding	0.90%	4.58%	1.18%	0.99%	0.12%	0.88%	1.26%
Kitesurfing	0.29%	0.28%	0.14%	0.25%	0.00%	0.00%	0.22%
Angling (from a boat)	0.74%	1.94%	1.03%	0.77%	0.92%	2.33%	0.97%
Angling (from the shore)	1.35%	2.96%	2.09%	1.92%	1.53%	4.95%	1.93%
Cliff climbing	0.73%	1.29%	1.08%	1.13%	0.47%	0.49%	0.94%
Coastal walking	9.90%	22.58%	11.29%	11.63%	10.20%	18.02%	12.15%
Outdoor swimming	11.81%	16.66%	9.21%	9.73%	6.29%	7.81%	10.59%
Leisure sub-aqua diving (from the shore and boat)	1.28%	1.35%	1.18%	1.07%	1.01%	0.97%	1.17%
Spending general leisure time at the beach	10.11%	17.78%	10.12%	12.31%	6.71%	18.15%	11.50%
Base	4,048	1,228	1,815	3,706	1,047	347	12,191

Base: all respondents (12,191 ; Source WaterSports and Leisure Omnibus Survey 2005)

Table 18 shows our estimate of the percentage of people participating in each sport by ITV region. In some regions we registered more decreases in participation rates than in others. In the North West/North East/Yorkshire region for example 8 out of the 21 activities have seen significant decreases in participation rates. The Midlands on the other hand seems to be more stable in participation rates with only one significant decrease.

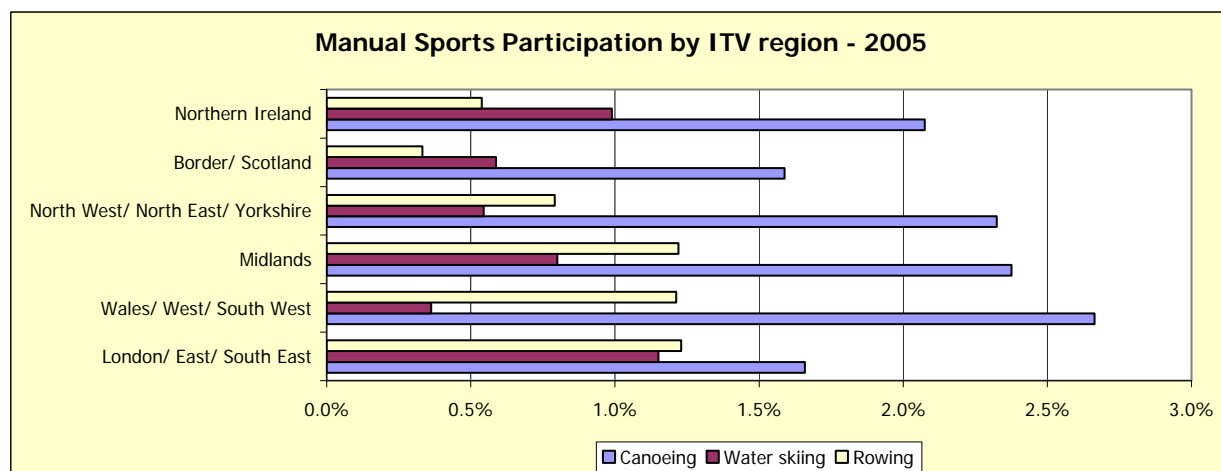
The 0% participation rate for small sail boat activities is due to the comparatively small sample size in the region.

As in previous years, the Wales/West/South West region records the highest participation rate of all ITV regions when looking at "any boating activity".

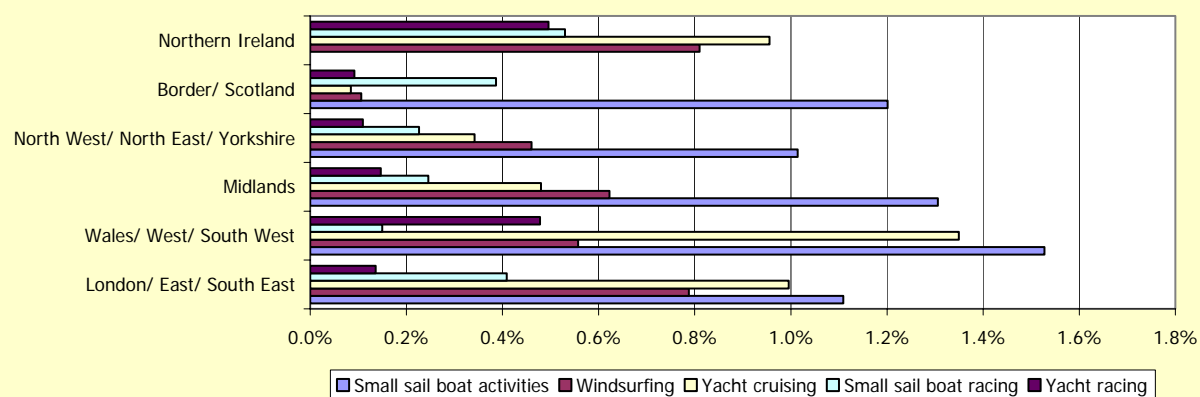
Table 19 Watersports participation by ITV region 2005 – Participant numbers

	ITV regions						
	London/ East/ South East	Wales/ West/ South West	Midlands	North West/ North East/ Yorkshire	Border/ Scotland	Northern Ireland	All regions
Any Activity	3,727,815	1,864,461	1,863,632	3,725,655	809,097	588,857	12,579,517
Any boating activity	1,113,605	384,151	524,390	975,043	180,837	98,463	3,276,489
Canoeing	245,816	121,402	175,099	359,337	66,985	29,781	998,421
Water skiing	170,616	16,503	58,952	84,225	24,760	14,200	369,256
Small sail boat activities	164,350	69,618	96,276	156,776	50,657	-	537,677
Rowing	182,280	55,254	89,966	122,360	14,004	7,724	471,588
Windsurfing	116,766	25,412	45,885	71,193	4,486	11,625	275,367
Using personal watercraft	134,060	31,418	44,546	117,070	24,245	23,118	374,458
Motor boating/Cruising	226,065	73,295	70,274	161,478	36,159	-	567,271
Yacht cruising	147,513	61,490	35,382	52,877	3,571	13,720	314,554
Power boating	134,758	40,212	36,584	111,658	26,153	12,324	361,690
Small sail boat racing	60,561	6,833	18,099	35,028	16,299	7,605	144,425
Canal boating	64,078	30,322	81,061	81,717	-	3,583	260,761
Yacht racing	20,224	21,797	10,788	16,922	3,861	7,116	80,707
Surfboarding	133,696	208,573	87,170	153,750	4,882	12,657	600,728
Kitesurfing	43,601	12,794	10,346	38,667	-	-	105,409
Angling (from a boat)	108,925	88,405	75,948	118,981	38,723	33,508	464,490
Angling (from the shore)	200,078	135,000	154,074	297,411	64,467	71,083	922,114
Cliff climbing	108,617	58,700	79,762	175,405	19,834	6,965	449,283
Coastal walking	1,467,684	1,028,984	832,460	1,797,262	429,977	258,674	5,815,041
Outdoor swimming	1,749,724	759,369	679,056	1,504,423	265,421	112,096	5,070,088
Leisure sub-aqua diving (from the shore and boat)	189,073	61,311	86,679	164,750	42,384	13,890	558,087
Spending general leisure time at the beach	1,498,421	810,345	745,996	1,903,558	282,969	260,442	5,501,730
Base	4,048	1,228	1,815	3,706	1,047	347	12,191

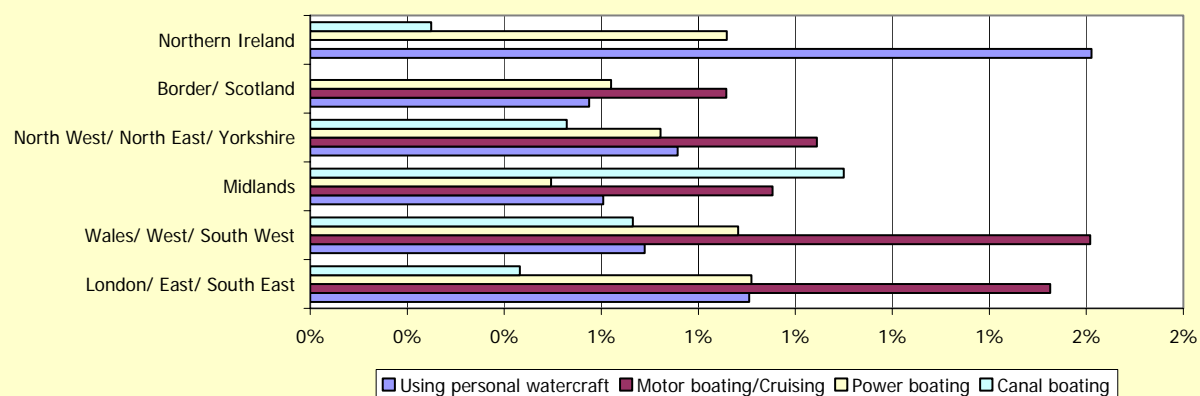
Base: all respondents (12,191, Source Watersports Omnibus Survey 2005)

Figure 8 Watersports participation by ITV regions

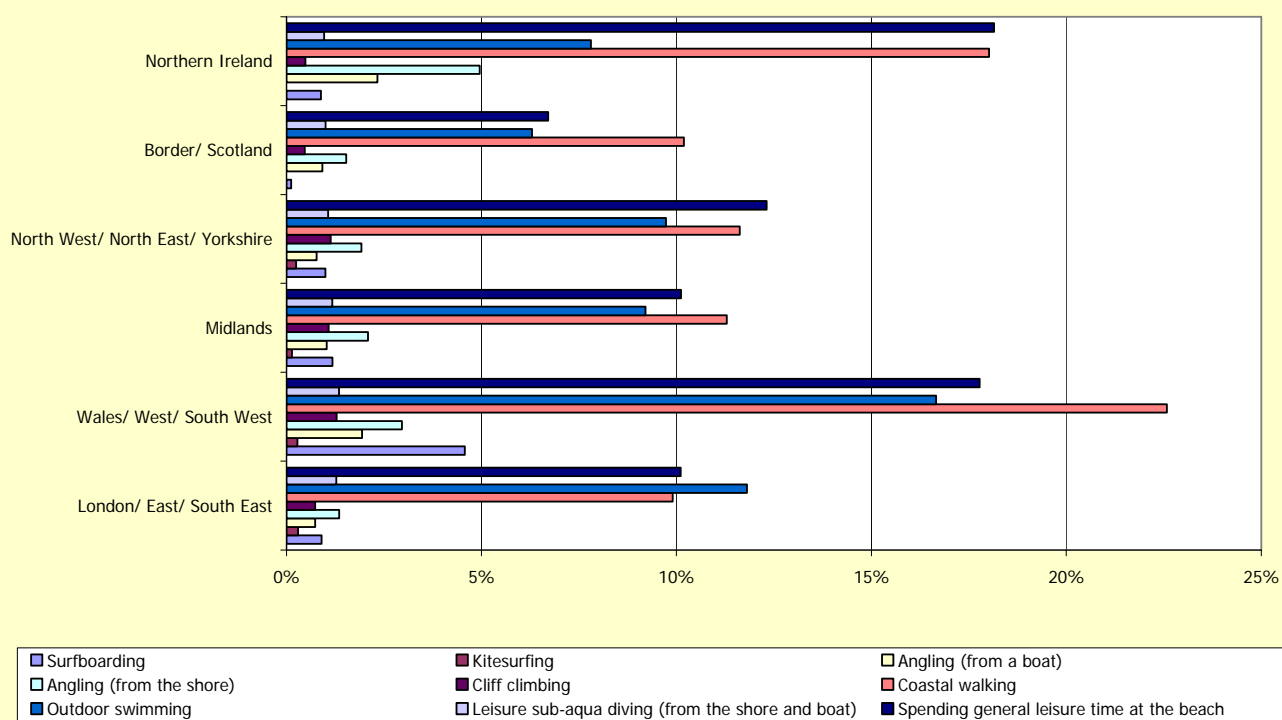
Sailing Sports Participation by ITV region - 2005



Power Sports Participation by ITV region - 2005



Other Activities Participation by ITV region - 2005



In Table 20 we have combined the 2004 and 2005 samples to provide an average participation rate over the two seasons. If the figures show a yellow background (or light grey in black and white copies), 2004 figures from the MCA survey were used to calculate the average. The figures for Northern Ireland are based on 2005 data only.

Table 20 Watersports participation by ITV regions– Average over 2004/2005

	ITV regions						
	London/ East/ South East	Wales/ West/ South West	Midlands	North West/ North East/ Yorkshire	Border/ Scotland	Northern Ireland	All regions
Any Activity	24.27%	38.97%	23.99%	24.10%	20.70%	41.03%	25.63%
Any boating activity	8.26%	9.26%	7.01%	7.15%	4.54%	6.86%	7.47%
Canoeing	2.08%	2.73%	2.44%	2.76%	1.59%	2.07%	2.39%
Water skiing	1.38%	0.78%	0.95%	0.77%	0.54%	0.99%	0.99%
Small sail boat activities	1.25%	1.91%	1.40%	0.96%	0.70%	0.00%	1.21%
Rowing	1.37%	1.36%	1.11%	1.25%	0.27%	0.54%	1.19%
Windsurfing	1.24%	0.73%	0.66%	0.63%	0.20%	0.81%	0.84%
Using personal watercraft	1.15%	0.74%	0.60%	1.03%	0.34%	1.61%	0.94%
Motor boating/Cruising	1.11%	1.70%	0.78%	1.02%	0.73%	0.00%	1.04%
Yacht cruising	1.00%	2.07%	0.54%	0.27%	0.59%	0.96%	0.78%
Power boating	1.10%	1.09%	0.55%	0.81%	0.51%	0.86%	0.88%
Small sail boat racing	0.75%	0.37%	0.42%	0.41%	0.59%	0.53%	0.55%
Canal boating	0.67%	0.43%	0.95%	0.56%	0.20%	0.25%	0.62%
Yacht racing	0.37%	0.29%	0.12%	0.10%	0.05%	0.50%	0.23%
Surfboarding	0.9%	4.2%	1.3%	0.9%	0.3%	0.9%	1.2%
Kitesurfing	0.2%	0.3%	0.1%	0.2%	0.1%	0.0%	0.2%
Angling (from a boat)	0.9%	1.8%	0.8%	1.2%	1.6%	2.3%	1.2%
Angling (from the shore)	1.8%	3.1%	2.1%	2.2%	2.3%	5.0%	2.2%
Cliff climbing	0.8%	1.5%	1.4%	1.1%	0.5%	0.5%	1.0%
Coastal walking	9.5%	21.6%	9.6%	10.7%	9.8%	18.0%	11.3%
Outdoor swimming	11.9%	16.5%	10.7%	10.8%	7.5%	7.8%	11.4%
Leisure sub-aqua diving (from the shore and boat)	1.4%	1.5%	1.2%	1.3%	1.2%	1.0%	1.3%
Spending general leisure time at the beach	9.5%	19.2%	8.8%	10.6%	8.6%	18.1%	10.8%

Base: all respondents (12,191 Watersports and Leisure Omnibus Survey 2005 and 5,967 RYA/BMF/Sunsail Survey 2004)

5. Frequency of Participation

Table 21 and Table 22 show the percentage of participants in each sport that reported their participation within each frequency group. The average frequency of participation is estimated from this data, and also takes into account the number of events i.e. each time a person participates (as detailed in section 8). In previous years this question asked about the frequency of participation in Great Britain, not UK.

The tables show that for most sports more participation takes place in the UK than abroad.

For example Yacht racing displays a large difference in average participation rates, 7.2 times a year for the UK, compared to 1.1 times while abroad. Canal boating and rowing are the activities people are least likely to do abroad. These results are consistent with previous years. However, there are some sports in which the biggest proportion of activity takes place abroad. Leisure sub-aqua diving has the biggest proportion of people who only participate abroad. In 2005 more than half those participating in leisure sub-aqua diving, and almost half of those who participated in personal watercraft activities did so exclusively abroad.

Table 21 also shows that despite the drop in overall participation rates, the average number of times people are participating in an activity has not decreased for all of the surveyed activities, which suggests that for example for canoeing less people are participating, but those that are participating do it more often.

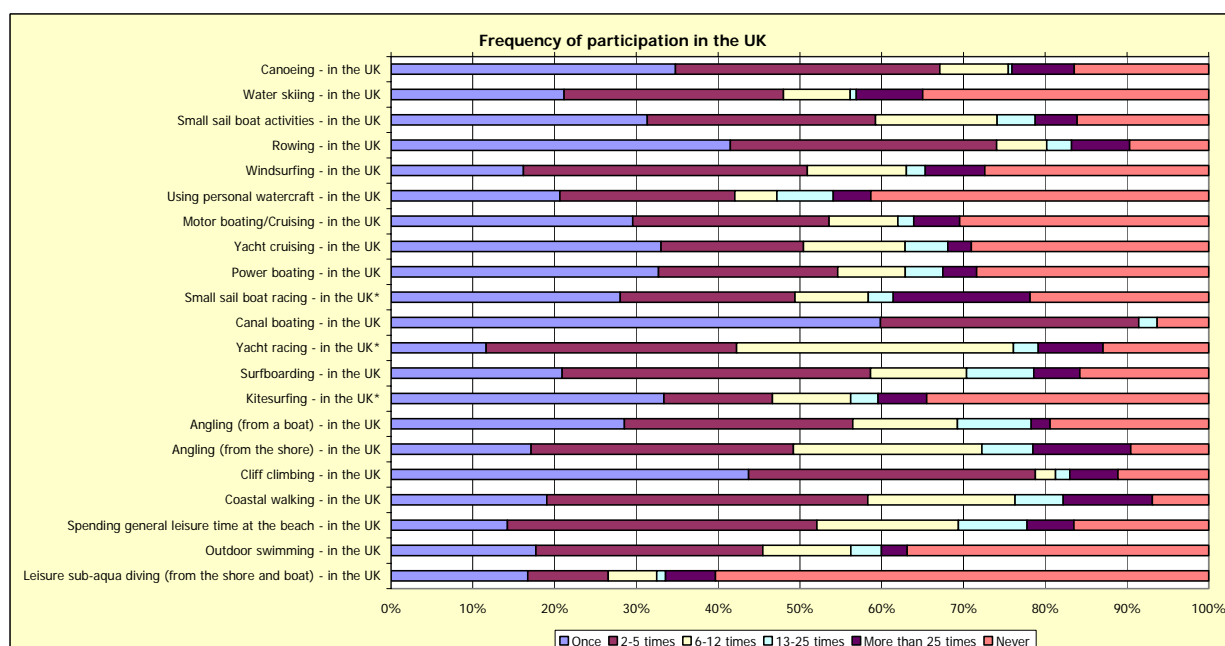
Table 21 Frequency of Participation: UK 2005

	Frequency of participation							Average participation		
	Once	2-5 times	6-12 times	13-25 times	More than 25 times	Never	Base	2005	2004	2003
Canoeing - in the UK	34.8%	32.3%	8.4%	0.4%	7.6%	16.4%	217	5.7	3.6	3.6
Water skiing - in the UK	21.2%	26.8%	8.2%	0.7%	8.1%	35.0%	80	5.7	1.6	3.4
Small sail boat activities - in the UK	31.3%	27.9%	14.9%	4.6%	5.1%	16.1%	118	5.1	4.4	5.2
Rowing - in the UK	41.5%	32.6%	6.1%	3.0%	7.1%	9.7%	110	9.6	5.0	5.7
Windsurfing - in the UK	16.2%	34.7%	12.1%	2.3%	7.3%	27.4%	61	5.3	3.7	3.4
Using personal watercraft - in the UK	20.6%	21.4%	5.1%	6.9%	4.6%	41.3%	83	4.1	4.1	3.8
Motor boating/Cruising - in the UK	29.6%	24.0%	8.4%	1.9%	5.6%	30.5%	128	4.5	4.7	4.1
Yacht cruising - in the UK	33.0%	17.4%	12.4%	5.2%	2.9%	29.0%	72	3.9	4.7	2.6
Power boating - in the UK	32.7%	21.9%	8.3%	4.6%	4.1%	28.4%	80	5.1	4.5	5.7
Small sail boat racing - in the UK*	28.0%	21.4%	9.0%	3.1%	16.7%	21.8%	33*	8.7	4.6	4.1
Canal boating - in the UK	59.8%	31.6%	0.0%	2.3%	0.0%	6.3%	63	2.3	3.7	2.3
Yacht racing - in the UK*	11.6%	30.7%	33.9%	3.0%	7.9%	12.9%	19*	8.8	8.9	7.6
Surfboarding - in the UK	20.9%	37.7%	11.7%	8.2%	5.6%	15.8%	134	7.4	9.0	n/a
Kitesurfing - in the UK*	33.4%	13.3%	9.6%	3.4%	5.9%	34.5%	22*	4.0	4.4	n/a
Angling (from a boat) - in the UK	28.5%	27.9%	12.8%	9.0%	2.3%	19.4%	108	4.9	7.5	n/a
Angling (from the shore) - in the UK	17.1%	32.1%	23.1%	6.2%	12.0%	9.5%	210	9.5	10.4	n/a
Cliff climbing - in the UK	43.7%	35.1%	2.4%	1.8%	5.9%	11.1%	100	4.2	4.2	n/a
Coastal walking - in the UK	19.1%	39.3%	18.0%	5.9%	10.9%	6.9%	1373	10.9	9.9	n/a
Outdoor swimming - in the UK	17.7%	27.7%	10.8%	3.7%	3.2%	36.9%	1194	4.1	5.0	n/a
Leisure sub-aqua diving (from the shore and boat) - in the UK	16.7%	9.9%	5.9%	1.1%	6.1%	60.3%	122	3.2	4.1	n/a
Spending general leisure time at the beach - in the UK	14.2%	37.8%	17.3%	8.4%	5.7%	16.5%	1315	8.0	8.4	n/a

Base: all respondents who participate in watersports

Source: Watersports participation survey 2005

*Caution: very small base size

Figure 9 Frequency of watersports participation in the UK

The question about participation abroad only covered the original 12 activities.

Table 22 Frequency of Participation: Abroad 2005

	Frequency of participation						Base	Average participation		
	Once	2-5 times	6-12 times	13-25 times	More than 25 times	Never		2005	2004	2003
Canoeing Abroad	17.7%	12.0%	3.6%	1.1%	0.8%	64.8%	217	1.4	0.8	1.6
Water skiing Abroad	23.2%	26.4%	1.5%	0.0%	3.1%	45.7%	80	2.2	3.1	1.7
Small sail boat activities Abroad	18.5%	14.2%	2.4%	0.0%	1.6%	63.3%	118	1.4	2.2	1.5
Rowing Abroad	10.0%	4.7%	1.2%	0.0%	0.0%	84.2%	110	0.4	1.0	1.7
Windsurfing Abroad	25.5%	17.9%	1.0%	1.4%	2.2%	52.0%	61	1.9	2.1	1.8
Using personal watercraft Abroad	23.1%	23.8%	8.6%	4.3%	2.4%	37.9%	83	3.4	2.3	2.1
Motor boating/Cruising Abroad	25.6%	16.6%	2.5%	0.4%	0.8%	54.1%	128	1.4	1.8	0.5
Yacht cruising Abroad	24.0%	16.1%	1.4%	3.7%	0.0%	54.8%	72	1.6	0.9	0.9
Power boating Abroad	27.8%	15.3%	4.7%	1.8%	0.0%	50.4%	80	1.6	2.5	1.9
Small sail boat racing Abroad*	19.1%	12.2%	3.1%	0.0%	3.0%	62.6%	33*	1.8	2.1	1.4
Canal boating Abroad	4.1%	0.0%	0.0%	0.0%	0.0%	95.9%	63	0.0	0.7	0.2
Yacht racing Abroad*	13.6%	12.7%	5.6%	0.0%	0.0%	68.1%	19*	1.1	1.8	2.0

Base: all respondents who participate in watersports

Source: Watersports participation survey 2005

*Caution: very small base size

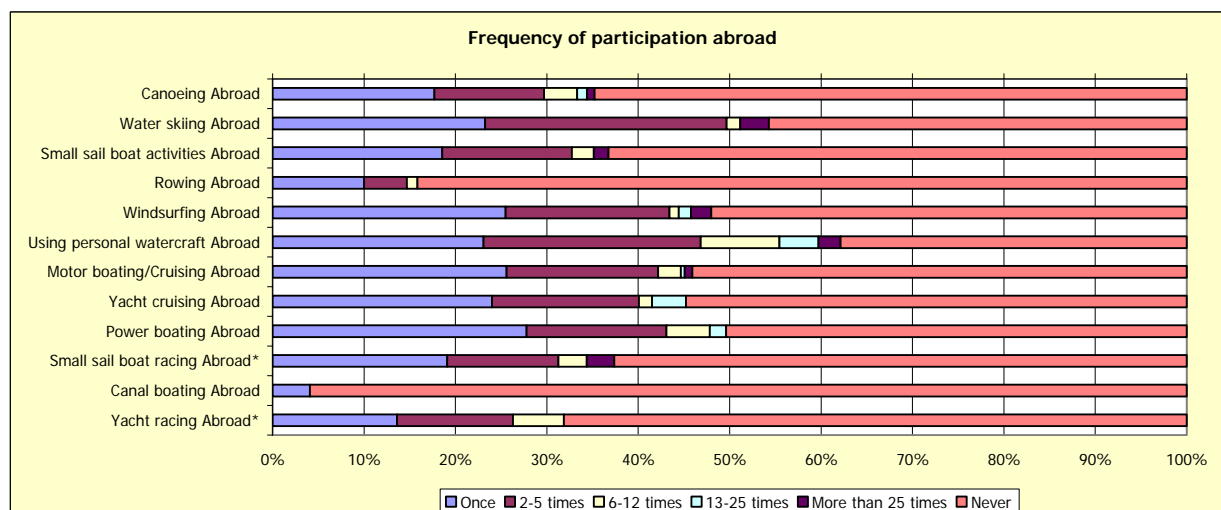
Figure 10 Frequency of watersports participation abroad 2005

Table 23 and Table 24 convert the participation rates into estimates of how many people are participating how frequently in each sport.

Table 23 Frequency of participation in UK (Numbers) 2005

	Frequency of participation						Total Number of people participating	Base
	Once	2-5 times	6-12 times	13-25 times	More than 25 times	Never		
Canoeing - in the UK	347,421	322,641	83,720	4,486	75,983	164,170	834,251	217
Water skiing - in the UK	78,153	99,014	30,188	2,740	29,997	129,164	240,092	80
Small sail boat activities - in the UK	168,484	150,073	80,035	24,937	27,538	86,610	451,067	118
Rowing - in the UK	195,680	153,537	28,966	14,341	33,423	45,640	425,948	110
Windsurfing - in the UK	44,602	95,571	33,423	6,341	20,046	75,384	199,983	61
Using personal watercraft - in the UK	77,321	80,168	19,270	25,695	17,266	154,738	219,720	83
Motor boating/Cruising - in the UK	167,758	136,078	47,774	10,967	31,891	172,803	394,468	128
Yacht cruising - in the UK	103,826	54,812	39,118	16,385	9,085	91,328	223,226	72
Power boating - in the UK	118,300	79,238	29,927	16,633	14,931	102,661	259,029	80
Small sail boat racing - in the UK*	40,484	30,853	12,946	4,420	24,172	31,549	112,876	33*
Canal boating - in the UK	156,036	82,450	-	5,872	-	16,403	244,358	63
Yacht racing - in the UK*	9,371	24,737	27,329	2,440	6,400	10,429	70,278	19*
Surfboarding - in the UK	125,656	226,594	70,531	49,418	33,858	94,671	506,057	134
Kitesurfing - in the UK*	35,180	13,993	10,069	3,536	6,266	36,364	69,045	22*
Angling (from a boat) - in the UK	132,520	129,815	59,371	41,943	10,661	90,180	374,310	108
Angling (from the shore) - in the UK	157,882	295,904	212,594	57,497	110,381	87,855	834,258	210
Cliff climbing - in the UK	196,425	157,643	10,999	7,901	26,486	49,828	399,455	100
Coastal walking - in the UK	1,107,919	2,282,759	1,046,198	342,764	634,310	401,091	5,413,950	1,373
Outdoor swimming - in the UK	897,975	1,406,941	545,865	189,379	160,209	1,869,718	3,200,370	1,194
Leisure sub-aqua diving (from the shore and boat) - in the UK	93,267	54,996	33,019	6,097	34,066	336,642	221,445	122
Spending general leisure time at the beach - in the UK	783,210	2,082,133	951,767	462,882	314,595	907,142	4,594,588	1,315

Base: all respondents who participate in watersports

Source: Watersports participation survey 2005

*Caution: very small base size

Table 24 Frequency of participation abroad (Numbers) 2005

	Frequency of participation						Number of people participating abroad	Base	2005	2004
	Once	2-5 times	6-12 times	13-25 times	More than 25 times	Never				
Canoeing Abroad	176,831	119,556	36,041	11,048	8,077	646,867	351,553	217	1.4	0.8
Water skiing Abroad	85,827	97,569	5,519	-	11,571	168,770	200,486	80	2.2	3.1
Small sail boat activities Abroad	99,696	76,321	12,909	-	8,548	340,203	197,474	118	1.4	2.2
Rowing Abroad	47,160	22,061	5,467	-	-	396,900	74,688	110	0.4	1.0
Windsurfing Abroad	70,192	49,371	2,740	3,722	6,097	143,244	132,122	61	1.9	2.1
Using personal watercraft Abroad	86,369	88,974	32,313	15,957	9,032	141,812	232,645	83	3.4	2.3
Motor boating/Cruising Abroad	145,251	93,999	14,020	2,475	4,695	306,831	260,440	128	1.4	1.8
Yacht cruising Abroad	75,494	50,555	4,495	11,718	-	172,293	142,262	72	1.6	0.9
Power boating Abroad	100,464	55,376	17,163	6,462	-	182,225	179,465	80	1.6	2.5
Small sail boat racing Abroad*	27,577	17,581	4,460	-	4,361	90,445	53,979	33*	1.8	2.1
Canal boating Abroad	10,621	-	-	-	-	250,140	10,621	63	0.0	0.7
Yacht racing Abroad*	10,976	10,240	4,495	-	-	54,995	25,711	19*	1.1	1.8

Base: all respondents who participate in watersports

Source: Watersports participation survey 2005

*Caution: very small base size

Table 25 shows the changes in the proportion of people carrying out any participation in UK and abroad from 2004 to 2005. The change in Cliff climbing implies a shift in preferences towards UK activities over those abroad. Bear in mind that some of the data, for example Kitesurfing and Yacht racing is based on a small number of respondents, i.e. the relatively large changes in participation abroad could be caused by only a couple of extra respondents answering positively in 2005 compared to 2004.

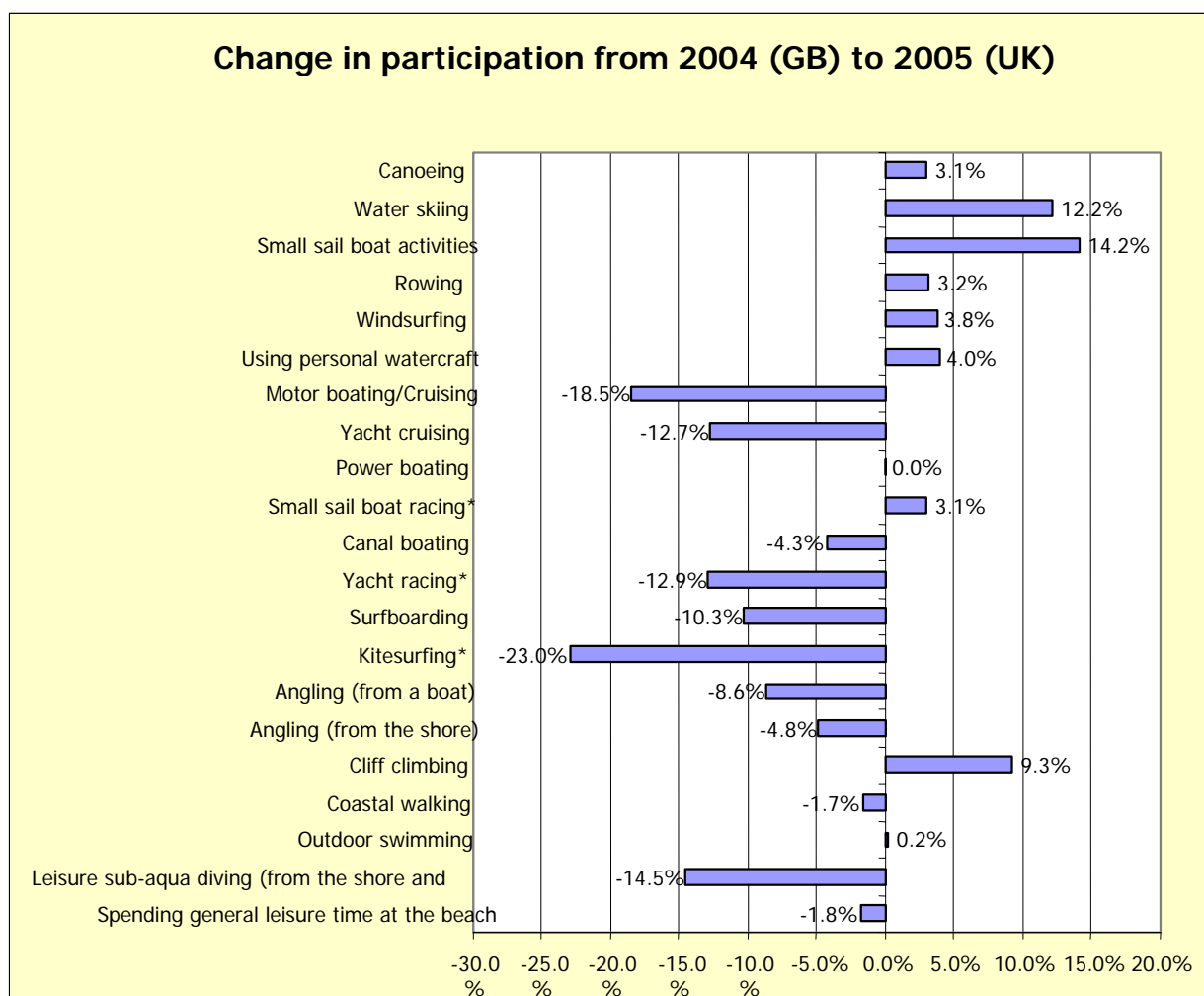
Table 25 Changes in the location of Participation 2004 to 2005

Proportion of participants participating in							
	UK/GB			Abroad			Base
	Change	2005 (UK)	2004 (GB)	Change	2005	2004	
Canoeing	3.1%	83.6%	80.5%	-1.3%	35.2%	36.5%	217
Water skiing	12.2%	65.0%	52.8%	-17.2%	54.3%	71.5%	80
Small sail boat activities	14.2%	83.9%	69.7%	-20.2%	36.7%	56.9%	118
Rowing	3.2%	90.3%	87.1%	-13.4%	15.8%	29.2%	110
Windsurfing	3.8%	72.6%	68.8%	-10.7%	48.0%	58.7%	61
Using personal watercraft	4.0%	58.7%	54.7%	4.8%	62.1%	57.3%	83
Motor boating/Cruising	-18.5%	69.5%	88.0%	-3.6%	45.9%	49.5%	128
Yacht cruising	-12.7%	71.0%	83.7%	1.3%	45.2%	43.9%	72
Power boating	0.0%	71.6%	71.6%	-9.3%	49.6%	58.9%	80
Small sail boat racing*	3.1%	78.2%	75.1%	-22.3%	37.4%	59.7%	33*
Canal boating	-4.3%	93.7%	98.0%	-14.5%	4.1%	18.6%	63
Yacht racing*	-12.9%	87.1%	100.0%	-32.2%	31.9%	64.1%	19*
Surfboarding	-10.3%	84.2%	94.6%	n/a	n/a	n/a	134
Kitesurfing*	-23.0%	65.5%	88.5%	n/a	n/a	n/a	22*
Angling (from a boat)	-8.6%	80.8%	89.4%	n/a	n/a	n/a	108
Angling (from the shore)	-4.8%	90.5%	95.3%	n/a	n/a	n/a	210
Cliff climbing	9.3%	89.0%	79.8%	n/a	n/a	n/a	100
Coastal walking	-1.7%	93.1%	94.8%	n/a	n/a	n/a	1,373
Outdoor swimming	0.2%	63.1%	62.9%	n/a	n/a	n/a	1,194
Leisure sub-aqua diving (from the shore and boat)	-14.5%	39.7%	54.2%	n/a	n/a	n/a	122
Spending general leisure time at the beach	-1.8%	83.5%	85.3%	n/a	n/a	n/a	1,315

Base: all respondents who participate in watersports

Source: Watersports participation survey 2005

*Caution: very small base size

Figure 11 Changes in the frequency of participation between 2004 and 2005 - UK

6. Where the Balance of Participation is taking place.

For the 12 original watersports we are able to examine where the balance of people's participation is taking place. This set of results is derived from bringing together each persons reported activity in both UK and Abroad. Their activities are then categorised into six groups to show where each person is doing their sport.

UK only	Only participated in UK
High in UK low abroad	Participated more than 5 times in UK and less than 6 times abroad.
Low in UK and abroad	Less than 6 times in UK and abroad.
High in UK and abroad	More than 5 times in UK and abroad.
Low in UK and high abroad	Participated less than 6 times in UK and more than 5 times abroad.
Abroad only	Only participated abroad.

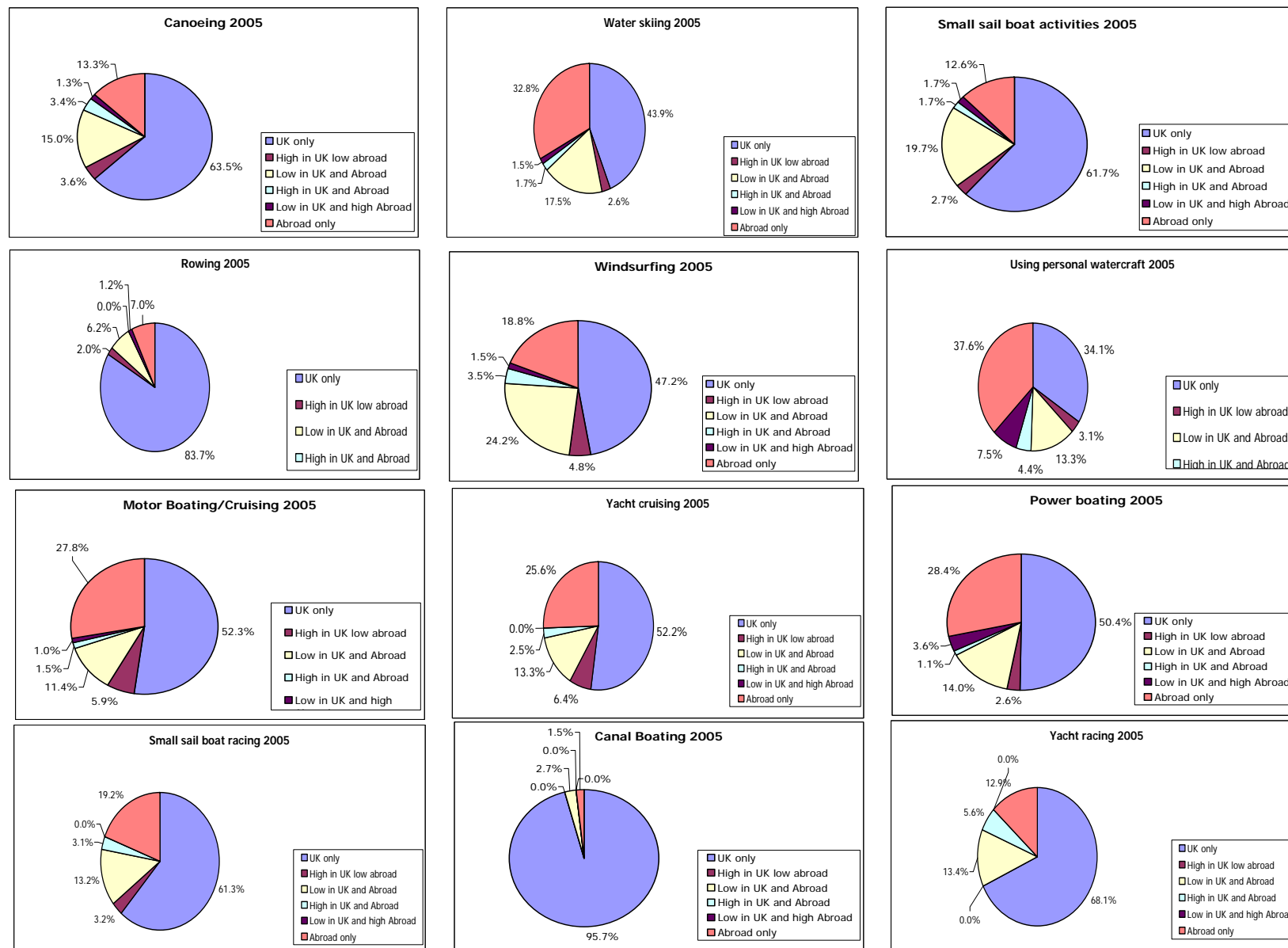
The data is presented as a table and pie charts for each watersport. It should be borne in mind that the numbers of people interviewed for each sport are small and therefore the data should only be taken as indicative of the overall patterns of participation.

Table 26 Where participation is taking place – 2005

	UK only	High in UK low abroad	Low in UK and Abroad	High in UK and Abroad	Low in UK and high Abroad	Abroad only
Small sail boat racing	61.3%	3.2%	13.2%	3.1%	0.0%	19.2%
Small sail boat activities	61.7%	2.7%	19.7%	1.7%	1.7%	12.6%
Yacht racing	68.1%	0.0%	13.4%	5.6%	0.0%	12.9%
Yacht cruising	52.2%	6.4%	13.3%	2.5%	0.0%	25.6%
Power boating	50.4%	2.6%	14.0%	1.1%	3.6%	28.4%
Motor boating/Cruising	52.3%	5.9%	11.4%	1.5%	1.0%	27.8%
Canal boating	95.7%	0.0%	2.7%	0.0%	0.0%	1.5%
Canoeing	63.5%	3.6%	15.0%	3.4%	1.3%	13.3%
Rowing	83.7%	2.0%	6.2%	0.0%	1.2%	7.0%
Windsurfing	47.2%	4.8%	24.2%	3.5%	1.5%	18.8%
Water skiing	43.9%	2.6%	17.5%	1.7%	1.5%	32.8%
Using personal watercraft	34.1%	3.1%	13.3%	4.4%	7.5%	37.6%

Base: all respondents 2005: 12,191

Source: Watersports Omnibus 2005

Figure 12 Where participation is taking place

7. Combinations of Activities

In this section we are using the 3 aggregated watersports groups described earlier to provide an insight into cross participation. Again these 3 groups only contain the original 12 watersports, not the activities added by the MCA.

Table 27 presents numbers and percentages of the proportion of people who do each type of sport who also participate in other types of watersports.

Table 27 Grouped Watersports Combination 2005

Also do						
People who do	Sail		Power		Manual	
	No.	%	No.	%	No.	%
Sail	1,110,237	100%	268,645	19%	354,182	22%
Power	268,645	24%	1,389,532	100%	368,918	23%
Manual	354,182	32%	368,918	27%	1,633,890	100%

Base: All who participate in one or other Watersports.

Source: Watersports Omnibus Survey – 2005

In Table 28 we have combined data from 2004 and 2005 to provide an indication of the proportion of people who do an activity who also participate in other watersports. This increases the robustness of the estimates for individual sports, although distorts annual results. The data should not be considered to be statistically robust, but gives some indication of the connections between each of the sports. A much larger sample would be required to provide statistically robust data.

Table 28 Watersports combinations – average 2004/2005

Also do...															
People who do...	Canoeing		Small sail boat		Rowing	Using personal watercraft		Motor boating/Cr Yacht using		Power boating	Small sail boat racing		Windsurfing	Canal boating	Yacht racing
	%	%	%	%		%	%	%	%		%	%			
Any Water sport	31.7%	13.1%	16.0%	15.8%	12.4%	14.0%	10.4%	11.6%	7.1%	11.0%	8.3%	2.9%			
Canoeing	100.0%	8.1%	12.5%	20.1%	6.4%	6.2%	4.0%	9.7%	8.6%	13.1%	3.6%	1.7%			
Water skiing	19.5%	100.0%	13.3%	14.1%	17.9%	16.8%	9.2%	24.7%	9.3%	20.8%	5.5%	2.5%			
Small sail boat activities	24.7%	10.9%	100.0%	13.2%	9.9%	4.9%	10.2%	15.9%	8.4%	9.2%	2.4%	2.0%			
Rowing	40.3%	11.6%	13.4%	100.0%	8.2%	11.1%	9.5%	12.8%	12.6%	14.5%	3.9%	4.5%			
Using personal watercraft	16.3%	18.8%	12.8%	10.4%	100.0%	10.3%	6.8%	17.5%	6.1%	9.3%	2.3%	2.9%			
Motor boating/Cruising	14.0%	15.8%	5.6%	12.6%	9.1%	100.0%	9.4%	9.9%	5.3%	7.1%	6.3%	1.1%			
Yacht cruising	12.3%	11.6%	15.7%	14.5%	8.2%	12.6%	100.0%	11.7%	8.9%	10.3%	10.1%	12.7%			
Power boating	26.7%	28.0%	22.1%	17.5%	18.9%	12.0%	10.5%	100.0%	12.6%	20.0%	6.0%	4.3%			
Small sail boat racing	38.1%	17.1%	18.8%	28.0%	10.6%	10.3%	12.9%	20.3%	100.0%	25.1%	5.4%	13.8%			
Windsurfing	37.8%	24.9%	13.5%	21.0%	10.5%	9.0%	9.8%	21.1%	16.4%	100.0%	3.5%	8.4%			
Canal boating	13.9%	8.7%	4.6%	7.5%	3.5%	10.6%	12.7%	8.4%	4.6%	4.7%	100.0%	2.7%			
Yacht racing	18.4%	11.6%	11.0%	25.2%	12.6%	5.6%	46.4%	17.3%	34.7%	32.2%	7.8%	100.0%			
Base	340	133	180	175	132	169	119	125	70	109	102	32			

Base: All who participate in one or other Watersports.

Source: Watersports Omnibus Surveys – 2004 and 2005

8. Seasonal Participation

Respondents who answered that they participated in an activity in the UK were asked about exactly how often they participated in each season the previous year. This makes it possible for us to give an estimate of the total number of events (i.e. each time a person participates) per season per activity or sport.

The seasons were defined as follows:

Summer 2005	June to August
Spring 2005	March to May
Winter 2005	December to February
Autumn 2004	September to November

In the MCA survey in 2004 the question about seasonal participation was asked differently. After asking the respondents how often they had taken part in an activity they were asked about in which season most of their activities took place, i.e. they were only able to point out one season. The number of events per season was then calculated using a mean number of events and combining this with when they said they participated. The new way of asking this question should provide us with more accurate events numbers, as the respondent is able to give a number of events for each individual season.

Table 29 shows the number of events for each sport split into the four seasons.

Table 29 Number of events per season

	Number of events in seasons					Respondent number
	Summer	Spring	Winter	Autumn	Total	
Canoeing	2,482,611	1,436,057	680,101	913,995	5,516,794	181
Water skiing	925,471	625,987	150,185	422,236	2,123,879	52
Small sail boat activities	1,746,123	600,628	94,863	312,175	2,753,790	100
Rowing	1,843,611	1,032,084	756,840	817,503	4,450,039	100
Windsurfing*	730,957	304,067	126,869	219,943	1,381,836	42*
Using personal watercraft*	1,140,869	286,025	115,182	38,454	1,580,531	48*
Motor boating/Cruising	1,257,909	623,789	251,442	361,742	2,494,883	87
Yacht cruising*	706,307	307,600	48,693	131,624	1,194,224	50*
Power boating	812,953	366,165	275,013	312,196	1,771,687	56
Small sail boat racing*	520,037	374,167	138,039	266,486	1,298,729	26*
Canal boating	266,402	141,082	39,516	116,484	563,483	59
Yacht racing*	358,866	204,398	79,865	93,321	736,450	17*
Surfboarding	2,303,196	726,341	549,258	679,185	4,257,981	114
Kitesurfing*	124,585	97,254	91,029	115,779	428,646	15*
Angling (from a boat)	1,083,742	452,909	251,222	329,324	2,117,197	88
Angling (from the shore)	3,689,085	2,075,408	1,419,091	1,805,727	8,989,311	192
Cliff climbing	816,766	397,380	263,336	292,299	1,769,780	88
Coastal walking	24,660,817	15,695,085	11,137,932	12,068,771	63,602,499	1,281
Outdoor swimming	15,390,718	2,669,740	833,484	1,404,093	20,318,644	770
Leisure sub-aqua diving (from the shore and boat)*	775,121	440,980	262,645	277,418	1,756,164	47*
Spending general leisure time at the beach	23,955,406	8,838,071	5,501,107	6,160,898	44,477,754	1,113

Base: all respondents who participate in an activity in the UK

Source: Watersports participation survey 2005

*Caution: very small base size

9. Distribution between Inland and Coastal Areas

Respondents participating in the UK were then asked if they participated at the coast or inland. Table 30 shows the distribution of participation between coastal and inland areas. This question was not asked of people participating in surfboarding, coastal walking and spending general leisure time at the beach, as they are by definition coastal activities.

Table 30 Participation at coast/seaside and in inland areas

	Always at the coast	3 out of 4 times at the coast	Half the time at the coast/Half the time inland	3 out of 4 times inland	Always inland	Don't know	Base
Canoeing	17.0%	3.3%	11.0%	10.0%	57.6%	1.1%	181
Water skiing	39.4%	3.0%	6.0%	7.6%	42.5%	1.5%	52
Small sail boat activities	43.0%	13.0%	9.0%	6.9%	27.1%	1.1%	100
Rowing	16.3%	2.6%	4.2%	15.7%	61.2%	0.0%	100
Windsurfing*	50.4%	6.7%	5.5%	10.3%	27.2%	0.0%	44*
Using personal watercraft*	59.2%	6.1%	7.7%	7.2%	17.6%	2.3%	49*
Motor boating/Cruising	41.1%	7.0%	2.4%	12.6%	36.9%	0.0%	87
Yacht cruising	90.4%	2.6%	5.1%	0.0%	1.9%	0.0%	51
Power boating	70.3%	3.3%	2.0%	9.0%	15.4%	0.0%	56
Small sail boat racing*	54.9%	8.6%	3.3%	11.5%	21.6%	0.0%	26*
Canal boating	2.9%	3.0%	2.8%	12.9%	78.4%	0.0%	59
Yacht racing*	74.2%	6.9%	13.7%	0.0%	5.2%	0.0%	17*
Surfboarding	100.0%	0.0%	0.0%	0.0%	0.0%	0.0%	-
Kitesurfing*	74.3%	19.8%	0.0%	5.9%	0.0%	0.0%	15*
Angling (from a boat)	62.6%	5.4%	4.8%	4.0%	23.2%	0.0%	89
Angling (from the shore)	35.5%	4.5%	8.4%	16.6%	34.7%	0.3%	192
Cliff climbing	33.4%	7.0%	7.5%	10.8%	28.0%	13.2%	89
Coastal walking	100.0%	0.0%	0.0%	0.0%	0.0%	0.0%	-
Outdoor swimming	58.6%	10.0%	6.8%	7.9%	14.8%	2.0%	770
Leisure sub-aqua diving (from the shore and boat)*	43.6%	8.3%	20.5%	18.2%	9.4%	0.0%	47*
Spending general leisure time at the beach	100.0%	0.0%	0.0%	0.0%	0.0%	0.0%	-

Base: all respondents who participate in an activity in the UK

Source: Watersports participation survey 2005

*Caution: very small base size

Using this distribution and the total number of events from the seasonal participation question, we can calculate an estimated number of events in inland and coastal areas.

Table 31 Number of coastal and inland events in the UK

	Number of coastal events	Number of inland events	Number of total events	Number of UK participants (i.e. who participate in the UK)	Number of respondents
Canoeing	1,668,417	3,848,377	5,516,794	834,251	181
Water skiing	738,057	1,385,822	2,123,879	240,092	52
Small sail boat activities	1,614,229	1,139,560	2,753,790	451,067	100
Rowing	1,535,758	2,914,281	4,450,039	425,948	100
Windsurfing*	1,002,065	379,771	1,381,836	192,286	42*
Using personal watercraft*	1,296,696	283,835	1,580,531	218,629	48*
Motor boating/Cruising	1,332,313	1,162,570	2,494,883	394,468	87
Yacht cruising*	1,129,786	64,438	1,194,224	221,138	50*
Power boating	1,372,773	398,914	1,771,687	259,029	56
Small sail boat racing*	840,646	458,084	1,298,729	112,876	26*
Canal boating	39,830	523,653	563,483	244,358	59
Yacht racing*	610,523	125,927	736,450	70,278	17*
Surfboarding	4,257,981	-	4,257,981	506,057	114
Kitesurfing*	416,947	11,699	428,646	69,045	15*
Angling (from a boat)	1,390,128	727,069	2,117,197	371,022	88
Angling (from the shore)	3,302,879	5,686,432	8,989,311	834,258	192
Cliff climbing	775,485	994,295	1,769,780	394,807	88
Coastal walking	63,602,499	-	63,602,499	5,413,950	1,281
Outdoor swimming	13,263,079	7,055,565	20,318,644	3,200,370	770
Leisure sub-aqua diving (from the shore and boat)*	954,757	801,406	1,756,164	221,445	47*
Spending general leisure time at the beach	44,477,754	-	44,477,754	4,594,588	1,113

Base: all respondents who participate in an activity in the UK

Source: Watersports participation survey 2005

*Caution: very small base size

10. Club Membership

Respondents were also asked if they are a member of a club for the activity or activities they participate in. This question was not asked of people participating in spending general leisure time at the beach.

Table 32 shows that only for small sail boat racing, yacht racing and leisure sub-aqua diving club membership is over 30%, with yacht racing having the highest proportion of club members. For all of the other activities club membership is not very wide spread.

Table 32 Club membership

	Yes	No	Number of respondents
Canoeing	12.0%	88.0%	181
Water skiing	7.7%	92.3%	52
Small sail boat activities	17.9%	82.1%	100
Rowing	12.1%	87.9%	100
Windsurfing*	6.7%	93.3%	44*
Using personal watercraft*	8.8%	91.2%	49*
Motor boating/Cruising	10.0%	90.0%	87
Yacht cruising	28.0%	72.0%	51
Power boating	9.8%	90.2%	56
Small sail boat racing*	48.1%	51.9%	26*
Canal boating	1.3%	98.7%	59
Yacht racing*	66.7%	33.3%	17*
Surfboarding	5.7%	94.3%	114
Kitesurfing*	5.1%	94.9%	15*
Angling (from a boat)	15.4%	84.6%	89
Angling (from the shore)	17.9%	82.1%	192
Cliff climbing	12.1%	87.9%	89
Coastal walking	1.1%	98.9%	1281
Outdoor swimming	1.2%	98.8%	770
Leisure sub-aqua diving (from the shore and boat)*	32.2%	67.8%	47*
Spending general leisure time at the beach	n/a	n/a	n/a

Base: all respondents who participate in an activity in the UK

Source: Watersports participation survey 2005

*Caution: very small base size

Table 33 Shows the number of events (i.e. each time a person participates) last year of club members and non-club members. It shows that in some sports there seems to be a clear relationship between the number of events and club membership. For example, only 18% of respondents who participate in small sail boat activities in the UK said they are a club member, but when looking at their number of events they generate almost 50% of the total events in that activity in the UK.

Table 33 Number of events by club membership status

	Club member					Non-club member				
	Number of coastal events	Number of inland events	Total Number of events	UK participant number	Number of respondents	Number of coastal events	Number of inland events	Total number of events	UK participant number	Number of respondents
Canoeing	720,509	1,366,226	2,086,734	100,111	22	947,908	2,482,152	3,430,060	734,140	1
Water skiing	178,695	747,284	925,979	18,450	4	559,362	638,538	1,197,901	221,642	
Small sail boat activities	593,868	686,079	1,279,947	80,892	19	1,020,361	453,482	1,473,843	370,175	
Rowing	953,020	1,963,823	2,916,842	51,710	12	582,738	950,459	1,533,197	374,238	
Windsurfing*	22,466	175,433	197,898	13,662	3	979,600	204,338	1,183,938	189,222	
Using personal watercraft*	222,146	11,995	234,142	19,422	4	1,074,549	271,840	1,346,389	201,066	
Motor boating/Cruising	247,776	400,378	648,154	39,430	9	1,084,536	762,192	1,846,729	355,038	
Yacht cruising	371,937	18,303	390,240	59,825	18	757,848	46,135	803,984	161,313	
Power boating	729,540	270,573	1,000,112	25,363	5	643,234	128,341	771,575	233,665	
Small sail boat racing*	487,682	433,051	920,733	54,344	12	352,964	25,033	377,996	58,531	
Canal boating	-	12,424	12,424	3,106	1	39,830	511,229	551,060	241,252	
Yacht racing*	493,795	108,432	602,227	46,851	13	116,728	17,496	134,223	23,427	
Surfboarding	357,481	-	357,481	29,046	7	3,900,499	-	3,900,499	477,011	1
Kitesurfing*	70,723	-	70,723	3,536	1	346,224	11,699	357,923	65,508	
Angling (from a boat)	354,152	105,480	459,632	57,875	14	1,035,976	621,589	1,657,565	317,227	
Angling (from the shore)	626,285	1,917,171	2,543,456	149,044	33	2,676,593	3,769,261	6,445,854	685,214	1
Cliff climbing	293,097	206,603	499,700	48,511	11	482,388	787,693	1,270,080	346,296	
Coastal walking	1,433,760	-	1,433,760	61,838	15	62,168,739	-	62,168,739	5,352,112	1,2
Outdoor swimming	370,886	211,563	582,450	38,267	10	12,892,193	6,844,002	19,736,194	3,162,103	7
Leisure sub-aqua diving (from the shore and boat)*	443,583	598,319	1,041,902	71,392	15	511,175	203,088	714,262	150,053	
Spending general leisure time at the beach	-	-	-	-	-	44,477,754	-	44,477,754	4,594,588	1,1

Base: all respondents who participate in an activity in the UK

Source: Watersports participation survey 2005

*Caution: very small base size

Appendix 1 – Questionnaire

Q1. I would now like to talk to you about some activities, including watersports. Please can you tell me which of these activities you have taken part in over the past 12 months ?

	Taken part over last 12 months	Not taken part over last 12 months	
Small sail boat racing (dinghies)	<input type="checkbox"/> 2	<input type="checkbox"/> 1	
Small sail boat activities (dinghies)	<input type="checkbox"/> 2	<input type="checkbox"/> 1	
Yacht racing	<input type="checkbox"/> 2	<input type="checkbox"/> 1	
Yacht cruising	<input type="checkbox"/> 2	<input type="checkbox"/> 1	
Power boating	<input type="checkbox"/> 2	<input type="checkbox"/> 1	
Motor Boating/Cruising	<input type="checkbox"/> 2	<input type="checkbox"/> 1	
Canal boating	<input type="checkbox"/> 2	<input type="checkbox"/> 1	
Canoeing	<input type="checkbox"/> 2	<input type="checkbox"/> 1	
Rowing	<input type="checkbox"/> 2	<input type="checkbox"/> 1	
Windsurfing	<input type="checkbox"/> 2	<input type="checkbox"/> 1	
Water Skiing	<input type="checkbox"/> 2	<input type="checkbox"/> 1	
Using Personal Watercraft (Jet skis etc)	<input type="checkbox"/> 2	<input type="checkbox"/> 1	
Surfboarding	<input type="checkbox"/> 2	<input type="checkbox"/> 1	
Kitesurfing	<input type="checkbox"/> 2	<input type="checkbox"/> 1	
Angling (from a boat)	<input type="checkbox"/> 2	<input type="checkbox"/> 1	
Angling (from the shore)	<input type="checkbox"/> 2	<input type="checkbox"/> 1	
Cliff climbing activities	<input type="checkbox"/> 2	<input type="checkbox"/> 1	
Coastal walking activities	<input type="checkbox"/> 2	<input type="checkbox"/> 1	
Spending general leisure time at the beach	<input type="checkbox"/> 2	<input type="checkbox"/> 1	
Outdoor Swimming	<input type="checkbox"/> 2	<input type="checkbox"/> 1	
Leisure sub-aqua diving (from the Shore & Boat)	<input type="checkbox"/> 2	<input type="checkbox"/> 1	
None of above		<input type="checkbox"/> 1	End interview

NB dinghies are small open sailing boats (not including seaside inflatables and beach toys) which tend to be brought ashore after use whereas Yachts are usually left in the water.

NB power boating is defined as craft that plane over water whilst motor boating / cruising is defined as river boating or coastal motor cruising which usually have on-board accommodation.

FOR **EACH** ACTIVITY IN WHICH RESPONDENT HAS PARTICIPATED ASK:

Q2. How often have you been (insert answer from Q.1) **IN THE UK** over the last year?

	Only once	2- 5 times	6-12 times	13-25 times	25 times or more	Never
Small sail boat racing (dinghies)	<input type="checkbox"/> 1	<input type="checkbox"/> 2	<input type="checkbox"/> 3	<input type="checkbox"/> 4	<input type="checkbox"/> 5	<input type="checkbox"/> 6
Small sail boat activities (dinghies)	<input type="checkbox"/> 1	<input type="checkbox"/> 2	<input type="checkbox"/> 3	<input type="checkbox"/> 4	<input type="checkbox"/> 5	<input type="checkbox"/> 6
Yacht racing	<input type="checkbox"/> 1	<input type="checkbox"/> 2	<input type="checkbox"/> 3	<input type="checkbox"/> 4	<input type="checkbox"/> 5	<input type="checkbox"/> 6
Yacht cruising	<input type="checkbox"/> 1	<input type="checkbox"/> 2	<input type="checkbox"/> 3	<input type="checkbox"/> 4	<input type="checkbox"/> 5	<input type="checkbox"/> 6
Power boating	<input type="checkbox"/> 1	<input type="checkbox"/> 2	<input type="checkbox"/> 3	<input type="checkbox"/> 4	<input type="checkbox"/> 5	<input type="checkbox"/> 6
Motor Boating/Cruising	<input type="checkbox"/> 1	<input type="checkbox"/> 2	<input type="checkbox"/> 3	<input type="checkbox"/> 4	<input type="checkbox"/> 5	<input type="checkbox"/> 6
Canal boating	<input type="checkbox"/> 1	<input type="checkbox"/> 2	<input type="checkbox"/> 3	<input type="checkbox"/> 4	<input type="checkbox"/> 5	<input type="checkbox"/> 6
Canoeing	<input type="checkbox"/> 1	<input type="checkbox"/> 2	<input type="checkbox"/> 3	<input type="checkbox"/> 4	<input type="checkbox"/> 5	<input type="checkbox"/> 6
Rowing	<input type="checkbox"/> 1	<input type="checkbox"/> 2	<input type="checkbox"/> 3	<input type="checkbox"/> 4	<input type="checkbox"/> 5	<input type="checkbox"/> 6
Windsurfing	<input type="checkbox"/> 1	<input type="checkbox"/> 2	<input type="checkbox"/> 3	<input type="checkbox"/> 4	<input type="checkbox"/> 5	<input type="checkbox"/> 6
Water Skiing	<input type="checkbox"/> 1	<input type="checkbox"/> 2	<input type="checkbox"/> 3	<input type="checkbox"/> 4	<input type="checkbox"/> 5	<input type="checkbox"/> 6
Using Personal Watercraft (Jet skis etc)	<input type="checkbox"/> 1	<input type="checkbox"/> 2	<input type="checkbox"/> 3	<input type="checkbox"/> 4	<input type="checkbox"/> 5	<input type="checkbox"/> 6
Surfboarding	<input type="checkbox"/> 1	<input type="checkbox"/> 2	<input type="checkbox"/> 3	<input type="checkbox"/> 4	<input type="checkbox"/> 5	<input type="checkbox"/> 6
Kitesurfing	<input type="checkbox"/> 1	<input type="checkbox"/> 2	<input type="checkbox"/> 3	<input type="checkbox"/> 4	<input type="checkbox"/> 5	<input type="checkbox"/> 6
Angling (from a boat)	<input type="checkbox"/> 1	<input type="checkbox"/> 2	<input type="checkbox"/> 3	<input type="checkbox"/> 4	<input type="checkbox"/> 5	<input type="checkbox"/> 6
Angling (from the shore)	<input type="checkbox"/> 1	<input type="checkbox"/> 2	<input type="checkbox"/> 3	<input type="checkbox"/> 4	<input type="checkbox"/> 5	<input type="checkbox"/> 6
Cliff climbing activities	<input type="checkbox"/> 1	<input type="checkbox"/> 2	<input type="checkbox"/> 3	<input type="checkbox"/> 4	<input type="checkbox"/> 5	<input type="checkbox"/> 6
Coastal walking activities	<input type="checkbox"/> 1	<input type="checkbox"/> 2	<input type="checkbox"/> 3	<input type="checkbox"/> 4	<input type="checkbox"/> 5	<input type="checkbox"/> 6
Spending general leisure time at the beach	<input type="checkbox"/> 1	<input type="checkbox"/> 2	<input type="checkbox"/> 3	<input type="checkbox"/> 4	<input type="checkbox"/> 5	<input type="checkbox"/> 6
Outdoor Swimming	<input type="checkbox"/> 1	<input type="checkbox"/> 2	<input type="checkbox"/> 3	<input type="checkbox"/> 4	<input type="checkbox"/> 5	<input type="checkbox"/> 6
Leisure sub-aqua diving (from the Shore & Boat)	<input type="checkbox"/> 1	<input type="checkbox"/> 2	<input type="checkbox"/> 3	<input type="checkbox"/> 4	<input type="checkbox"/> 5	<input type="checkbox"/> 6

FOR **EACH** OF THE FOLLOWING ACTIVITIES IN WHICH RESPONDENT HAS PARTICIPATED ASK:Q3. And how often have you been (insert answer from Q.1) **OUTSIDE THE UK** over the last year?

	Only once	2- 5 times	6-12 times	13-25 times	25 times or more	Never
Small sail boat racing (dinghies)	<input type="checkbox"/> 1	<input type="checkbox"/> 2	<input type="checkbox"/> 3	<input type="checkbox"/> 4	<input type="checkbox"/> 5	<input type="checkbox"/> 6
Small sail boat activities (dinghies)	<input type="checkbox"/> 1	<input type="checkbox"/> 2	<input type="checkbox"/> 3	<input type="checkbox"/> 4	<input type="checkbox"/> 5	<input type="checkbox"/> 6
Yacht racing	<input type="checkbox"/> 1	<input type="checkbox"/> 2	<input type="checkbox"/> 3	<input type="checkbox"/> 4	<input type="checkbox"/> 5	<input type="checkbox"/> 6
Yacht cruising	<input type="checkbox"/> 1	<input type="checkbox"/> 2	<input type="checkbox"/> 3	<input type="checkbox"/> 4	<input type="checkbox"/> 5	<input type="checkbox"/> 6
Power boating	<input type="checkbox"/> 1	<input type="checkbox"/> 2	<input type="checkbox"/> 3	<input type="checkbox"/> 4	<input type="checkbox"/> 5	<input type="checkbox"/> 6
Motor Boating/Cruising	<input type="checkbox"/> 1	<input type="checkbox"/> 2	<input type="checkbox"/> 3	<input type="checkbox"/> 4	<input type="checkbox"/> 5	<input type="checkbox"/> 6
Canal boating	<input type="checkbox"/> 1	<input type="checkbox"/> 2	<input type="checkbox"/> 3	<input type="checkbox"/> 4	<input type="checkbox"/> 5	<input type="checkbox"/> 6
Canoeing	<input type="checkbox"/> 1	<input type="checkbox"/> 2	<input type="checkbox"/> 3	<input type="checkbox"/> 4	<input type="checkbox"/> 5	<input type="checkbox"/> 6
Rowing	<input type="checkbox"/> 1	<input type="checkbox"/> 2	<input type="checkbox"/> 3	<input type="checkbox"/> 4	<input type="checkbox"/> 5	<input type="checkbox"/> 6
Windsurfing	<input type="checkbox"/> 1	<input type="checkbox"/> 2	<input type="checkbox"/> 3	<input type="checkbox"/> 4	<input type="checkbox"/> 5	<input type="checkbox"/> 6
Water Skiing	<input type="checkbox"/> 1	<input type="checkbox"/> 2	<input type="checkbox"/> 3	<input type="checkbox"/> 4	<input type="checkbox"/> 5	<input type="checkbox"/> 6
Using Personal Watercraft (Jet skis etc)	<input type="checkbox"/> 1	<input type="checkbox"/> 2	<input type="checkbox"/> 3	<input type="checkbox"/> 4	<input type="checkbox"/> 5	<input type="checkbox"/> 6

FOR **EACH** OF THE FOLLOWING ACTIVITIES IN WHICH RESPONDENT HAS PARTICIPATED **in UK** ask:

Q4. You said that you participate in (activity) approximately (mid-value from q2 categories) times. How many of these times did you participate in summer, spring, winter and autumn?

Mid values for q2 categories

Only once = 1

2 – 5 times = 4

6 – 12 times = 8

13 – 25 times = 20

25 or more times = 30

	Summer 2005 (Jun – Aug)	Spring 2005 (Mar – May)	Winter 2005/04 (Dec – Feb)	Autumn 2004 (Sept – Nov)	Total	A better reflection
Small sail boat racing (dinghies)	_____	_____	_____	_____	= mid-value of q2 participation rate category	<input type="checkbox"/> 9
Small sail boat activities (dinghies)	_____	_____	_____	_____		<input type="checkbox"/> 9
Yacht racing	_____	_____	_____	_____		<input type="checkbox"/> 9
Yacht cruising	_____	_____	_____	_____		<input type="checkbox"/> 9
Power boating	_____	_____	_____	_____		<input type="checkbox"/> 9
Motor Boating/Cruising	_____	_____	_____	_____	If higher or lower check and indicate if this is a better reflection of how often they participate in the activity	<input type="checkbox"/> 9
Canal boating	_____	_____	_____	_____		<input type="checkbox"/> 9
Canoeing	_____	_____	_____	_____		<input type="checkbox"/> 9
Rowing	_____	_____	_____	_____		<input type="checkbox"/> 9
Windsurfing	_____	_____	_____	_____		<input type="checkbox"/> 9
Water Skiing	_____	_____	_____	_____		<input type="checkbox"/> 9
Using Personal Watercraft (Jet skis etc)	_____	_____	_____	_____		<input type="checkbox"/> 9
Surfboarding	_____	_____	_____	_____		<input type="checkbox"/> 9
Kite surfing	_____	_____	_____	_____		<input type="checkbox"/> 9
Angling (from a boat)	_____	_____	_____	_____		<input type="checkbox"/> 9
Angling (from the shore)	_____	_____	_____	_____		<input type="checkbox"/> 9
Cliff climbing	_____	_____	_____	_____		<input type="checkbox"/> 9
Coastal walking	_____	_____	_____	_____		<input type="checkbox"/> 9
Spending general leisure time at the beach	_____	_____	_____	_____		<input type="checkbox"/> 9
Outdoor Swimming	_____	_____	_____	_____		<input type="checkbox"/> 9
Leisure sub-aqua diving (from the Shore & Boat)	_____	_____	_____	_____		

FOR ***EACH*** ACTIVITY IN WHICH RESPONDENT HAS PARTICIPATED **IN UK** (except those in blue) ASK:
Q5. And what proportion of the time do you participate at the coast / sea and what proportion of the time at using inland water?

	Always at the coast / seaside	3 out of 4 times at the coast / seaside	Half the time at the coast, half the time using inland water	3 out of 4 times using inland water	Always using inland water
Small sail boat racing (dinghies)	<input type="checkbox"/> 1	<input type="checkbox"/> 2	<input type="checkbox"/> 3	<input type="checkbox"/> 4	<input type="checkbox"/> 5
Small sail boat activities (dinghies)	<input type="checkbox"/> 1	<input type="checkbox"/> 2	<input type="checkbox"/> 3	<input type="checkbox"/> 4	<input type="checkbox"/> 5
Yacht racing	<input type="checkbox"/> 1	<input type="checkbox"/> 2	<input type="checkbox"/> 3	<input type="checkbox"/> 4	<input type="checkbox"/> 5
Yacht cruising	<input type="checkbox"/> 1	<input type="checkbox"/> 2	<input type="checkbox"/> 3	<input type="checkbox"/> 4	<input type="checkbox"/> 5
Power boating	<input type="checkbox"/> 1	<input type="checkbox"/> 2	<input type="checkbox"/> 3	<input type="checkbox"/> 4	<input type="checkbox"/> 5
Motor Boating/Cruising	<input type="checkbox"/> 1	<input type="checkbox"/> 2	<input type="checkbox"/> 3	<input type="checkbox"/> 4	<input type="checkbox"/> 5
Canal boating	<input type="checkbox"/> 1	<input type="checkbox"/> 2	<input type="checkbox"/> 3	<input type="checkbox"/> 4	<input type="checkbox"/> 5
Canoeing	<input type="checkbox"/> 1	<input type="checkbox"/> 2	<input type="checkbox"/> 3	<input type="checkbox"/> 4	<input type="checkbox"/> 5
Rowing	<input type="checkbox"/> 1	<input type="checkbox"/> 2	<input type="checkbox"/> 3	<input type="checkbox"/> 4	<input type="checkbox"/> 5
Windsurfing	<input type="checkbox"/> 1	<input type="checkbox"/> 2	<input type="checkbox"/> 3	<input type="checkbox"/> 4	<input type="checkbox"/> 5
Water Skiing	<input type="checkbox"/> 1	<input type="checkbox"/> 2	<input type="checkbox"/> 3	<input type="checkbox"/> 4	<input type="checkbox"/> 5
Using Personal Watercraft (Jet skis etc)	<input type="checkbox"/> 1	<input type="checkbox"/> 2	<input type="checkbox"/> 3	<input type="checkbox"/> 4	<input type="checkbox"/> 5
Surfboarding	<input type="checkbox"/> 1	<input type="checkbox"/> 2	<input type="checkbox"/> 3	<input type="checkbox"/> 4	<input type="checkbox"/> 5
Kitesurfing	<input type="checkbox"/> 1	<input type="checkbox"/> 2	<input type="checkbox"/> 3	<input type="checkbox"/> 4	<input type="checkbox"/> 5
Angling (from a boat)	<input type="checkbox"/> 1	<input type="checkbox"/> 2	<input type="checkbox"/> 3	<input type="checkbox"/> 4	<input type="checkbox"/> 5
Angling (from the shore)	<input type="checkbox"/> 1	<input type="checkbox"/> 2	<input type="checkbox"/> 3	<input type="checkbox"/> 4	<input type="checkbox"/> 5
Cliff climbing	<input type="checkbox"/> 1	<input type="checkbox"/> 2	<input type="checkbox"/> 3	<input type="checkbox"/> 4	<input type="checkbox"/> 5
Coastal walking	<input type="checkbox"/> 1	<input type="checkbox"/> 2	<input type="checkbox"/> 3	<input type="checkbox"/> 4	<input type="checkbox"/> 5
Spending general leisure time at the beach	<input type="checkbox"/> 1	<input type="checkbox"/> 2	<input type="checkbox"/> 3	<input type="checkbox"/> 4	<input type="checkbox"/> 5
Outdoor Swimming	<input type="checkbox"/> 1	<input type="checkbox"/> 2	<input type="checkbox"/> 3	<input type="checkbox"/> 4	<input type="checkbox"/> 5
Leisure sub-aqua diving (from the Shore & Boat)	<input type="checkbox"/> 1	<input type="checkbox"/> 2	<input type="checkbox"/> 3	<input type="checkbox"/> 4	<input type="checkbox"/> 5

FOR ***EACH*** ACTIVITY IN WHICH RESPONDENT HAS PARTICIPATED **in UK** (except those in blue) ask:
Q6. Are you a member of any XXXXXX club / association?

	Yes	No
Small sail boat racing (dinghies)	<input type="checkbox"/> 1	<input type="checkbox"/> 2
Small sail boat activities (dinghies)	<input type="checkbox"/> 1	<input type="checkbox"/> 2
Yacht racing	<input type="checkbox"/> 1	<input type="checkbox"/> 2
Yacht cruising	<input type="checkbox"/> 1	<input type="checkbox"/> 2
Power boating	<input type="checkbox"/> 1	<input type="checkbox"/> 2
Motor Boating/Cruising	<input type="checkbox"/> 1	<input type="checkbox"/> 2
Canal boating	<input type="checkbox"/> 1	<input type="checkbox"/> 2
Canoeing	<input type="checkbox"/> 1	<input type="checkbox"/> 2
Rowing	<input type="checkbox"/> 1	<input type="checkbox"/> 2
Windsurfing	<input type="checkbox"/> 1	<input type="checkbox"/> 2
Water Skiing	<input type="checkbox"/> 1	<input type="checkbox"/> 2
Using Personal Watercraft (Jet skis etc)	<input type="checkbox"/> 1	<input type="checkbox"/> 2
Surfboarding	<input type="checkbox"/> 1	<input type="checkbox"/> 2
Kite surfing	<input type="checkbox"/> 1	<input type="checkbox"/> 2
Angling (from a boat)	<input type="checkbox"/> 1	<input type="checkbox"/> 2
Angling (from the shore)	<input type="checkbox"/> 1	<input type="checkbox"/> 2
Cliff climbing	<input type="checkbox"/> 1	<input type="checkbox"/> 2
Coastal walking	<input type="checkbox"/> 1	<input type="checkbox"/> 2
Spending general leisure time at the beach	<input type="checkbox"/> 1	<input type="checkbox"/> 2
Outdoor Swimming	<input type="checkbox"/> 1	<input type="checkbox"/> 2
Leisure sub-aqua diving (from the Shore & Boat)	<input type="checkbox"/> 1	<input type="checkbox"/> 2

FOR ***EACH*** ACTIVITY IN WHICH RESPONDENT HAS PARTICIPATED **in UK** ASK:

Q7. Where do you most often visit to undertake (EACH ACTIVITY)? (MAP PROVIDED)

<i>Inland Areas</i>	<i>Yes</i>	<i>Coastal Areas</i>	<i>Yes</i>
1 - South East / Kent	<input type="checkbox"/> 1	24 - SHETLAND	<input type="checkbox"/> 24
2 - South East / East Sussex	<input type="checkbox"/> 2	25 - HOLYHEAD	<input type="checkbox"/> 25
3 - South East / West Sussex / Hants	<input type="checkbox"/> 3	26 - MILFORD HAVEN	<input type="checkbox"/> 26
4 - East / South Essex	<input type="checkbox"/> 4	27 - SWANSEA	<input type="checkbox"/> 27
5 - East / Norfolk	<input type="checkbox"/> 5	28 - FALMOUTH	<input type="checkbox"/> 28
6 - North West	<input type="checkbox"/> 6	29 - BRIXHAM	<input type="checkbox"/> 29
7 - North West	<input type="checkbox"/> 7	30 - PORTLAND	<input type="checkbox"/> 30
8 - North East	<input type="checkbox"/> 8	31 - LONDON	<input type="checkbox"/> 31
9 - Borders	<input type="checkbox"/> 9	32 - BELFAST	<input type="checkbox"/> 32
10 - Lake District	<input type="checkbox"/> 10	33 - HUMBER	<input type="checkbox"/> 33
11 - Glasgow	<input type="checkbox"/> 11	34 - YARMOUTH	<input type="checkbox"/> 34
12 - Mid Scotland / Edinburgh	<input type="checkbox"/> 12	35 - THAMES	<input type="checkbox"/> 35
13 - East Scotland / Dundee	<input type="checkbox"/> 13	36 - DOVER	<input type="checkbox"/> 36
14 - East Scotland / Aberdeen	<input type="checkbox"/> 14	37 - SOLENT	<input type="checkbox"/> 37
15 - North East Scotland / Elgin	<input type="checkbox"/> 15	38 - LIVERPOOL	<input type="checkbox"/> 38
16 - North Scotland / Inverness	<input type="checkbox"/> 16	39 - FORTH	<input type="checkbox"/> 39
17 - North Scotland	<input type="checkbox"/> 17	40 - ABERDEEN	<input type="checkbox"/> 40
18 - North Scotland	<input type="checkbox"/> 18	41 - STORNAWAY	<input type="checkbox"/> 41
19 - North West Scotland	<input type="checkbox"/> 19	42 - CLYDE	<input type="checkbox"/> 42
20 - North West Scotland	<input type="checkbox"/> 20	NONE OF THE ABOVE	<input type="checkbox"/> 43
21 - Scotland	<input type="checkbox"/> 21		
22 - North West Scotland	<input type="checkbox"/> 22		
23 - North West Scotland	<input type="checkbox"/> 23		

FOR ***EACH*** ACTIVITY IN WHICH RESPONDENT HAS PARTICIPATED **outside the UK** ASK:Q8. Over the last year, where **outside the UK** have you been to participate in (EACH ACTIVITY)?

Allow more than one response

Greece	<input type="checkbox"/> 1
Turkey	<input type="checkbox"/> 1
France	<input type="checkbox"/> 1
Spain	<input type="checkbox"/> 1
Italy	<input type="checkbox"/> 1
Other Med	<input type="checkbox"/> 1
Caribbean	<input type="checkbox"/> 1
Middle East	<input type="checkbox"/> 1
Far East	<input type="checkbox"/> 1
USA	<input type="checkbox"/> 1
Rest of the World	<input type="checkbox"/> 1